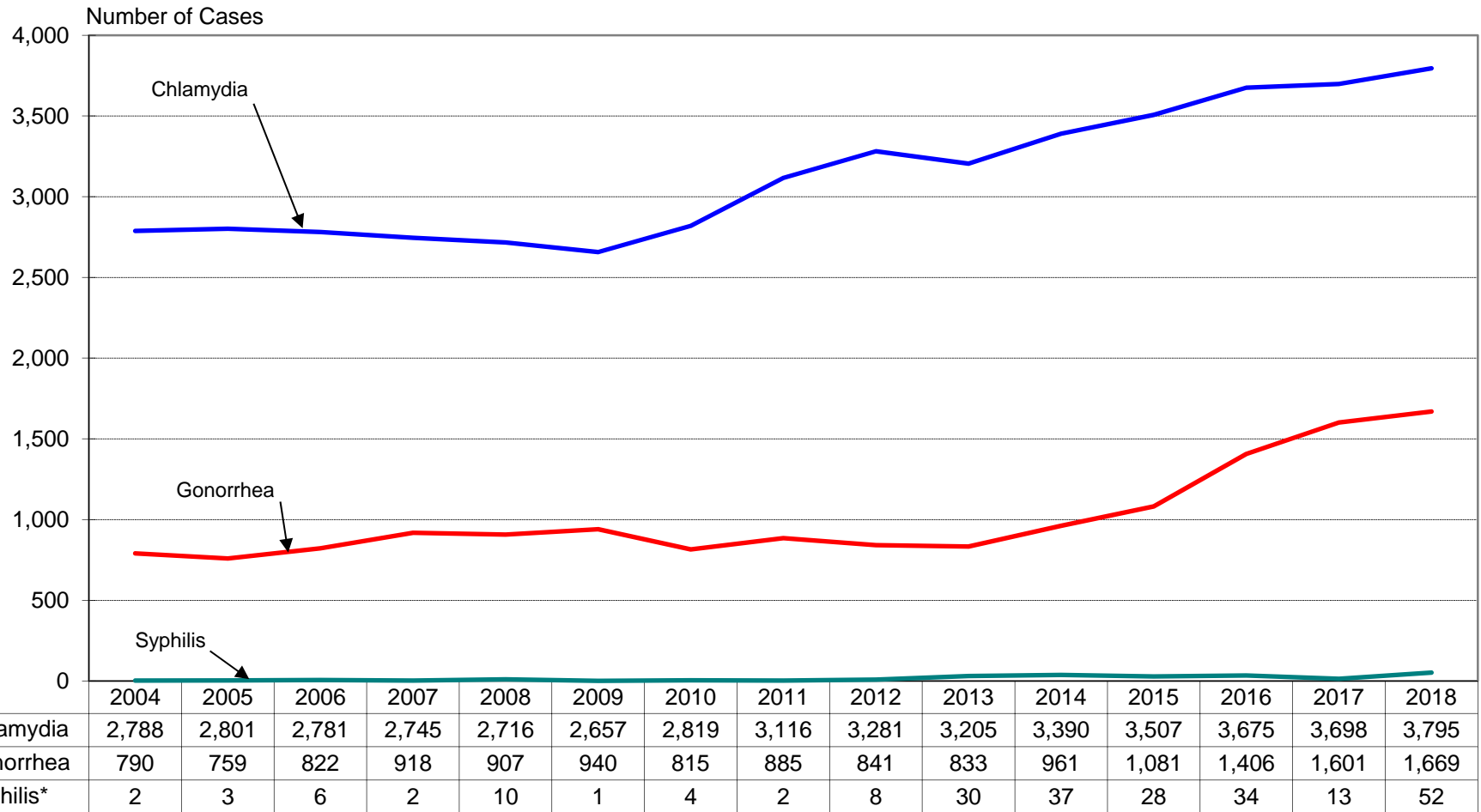




STDs in Douglas County

Douglas County Health Department

Number of Cases of Sexually Transmitted Diseases Douglas County, NE 2004-2018



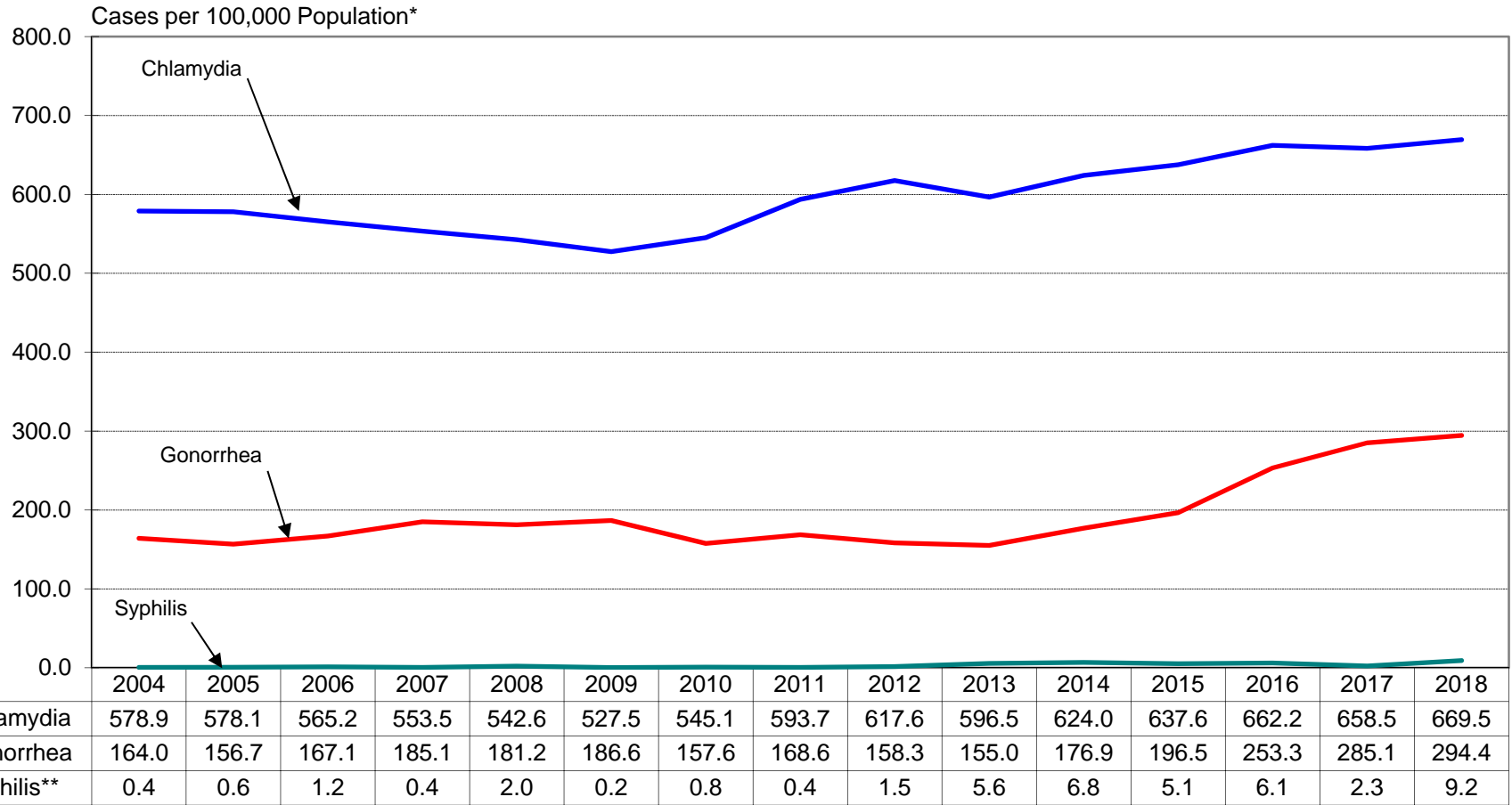
* Primary and Secondary Syphilis.
Source: Douglas County STD
Based on Date of Report



Sexually Transmitted Disease Rates*

Douglas County, NE

2004-2018



* 2004-2009 populations used for rate calculations are Projection Estimates for Douglas County from Woods & Poole Economics, 2010 which uses the US Decennial Census, and 2011-2018 which use the US Census Bureau Population Estimates Program.

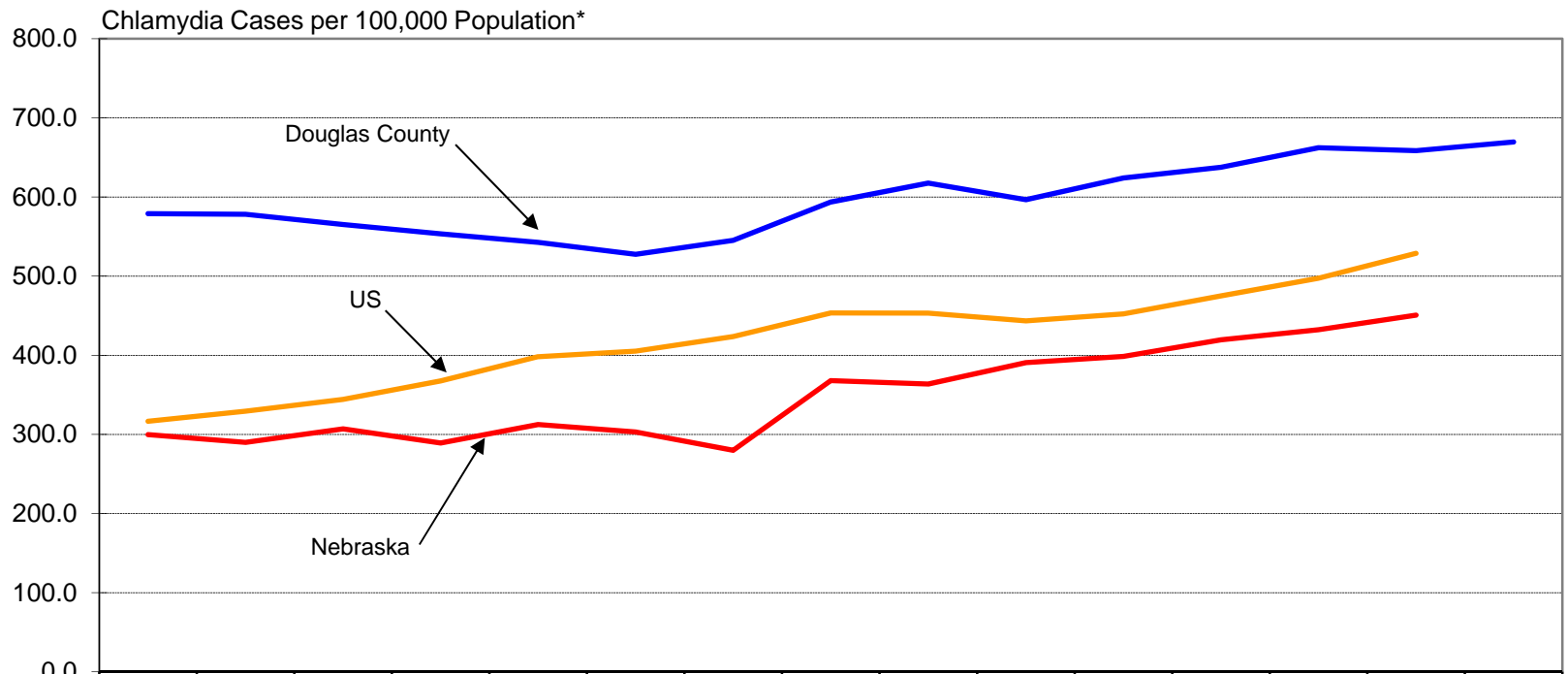
** Primary and Secondary Syphilis.

Source: Douglas County STD
Based on Date of Report

Chlamydia Rates*

Douglas County, Nebraska, and US

2004-2018



	2004	2005	2006	2007	2008	2009	2010	2011	2012	2013	2014	2015	2016	2017	2018
— Douglas County	578.9	578.1	565.2	553.5	542.6	527.5	545.1	593.7	617.6	596.5	624.0	637.6	662.2	658.5	669.5
— Nebraska**	299.8	289.9	307.0	289.2	312.5	303.0	280.0	368.0	363.7	390.7	398.6	419.6	432.3	450.7	NA
— US**	316.5	329.4	344.3	367.5	398.1	405.3	423.6	453.4	453.3	443.5	452.2	475.0	497.3	528.8	NA

* 2004-2009 populations used for rate calculations are Projection Estimates for Douglas County from Woods & Poole Economics, 2010 which uses the US Decennial Census, and 2011-2018 which use the US Census Bureau Population Estimates Program.

** Source: CDC Sexually Transmitted Diseases Surveillance

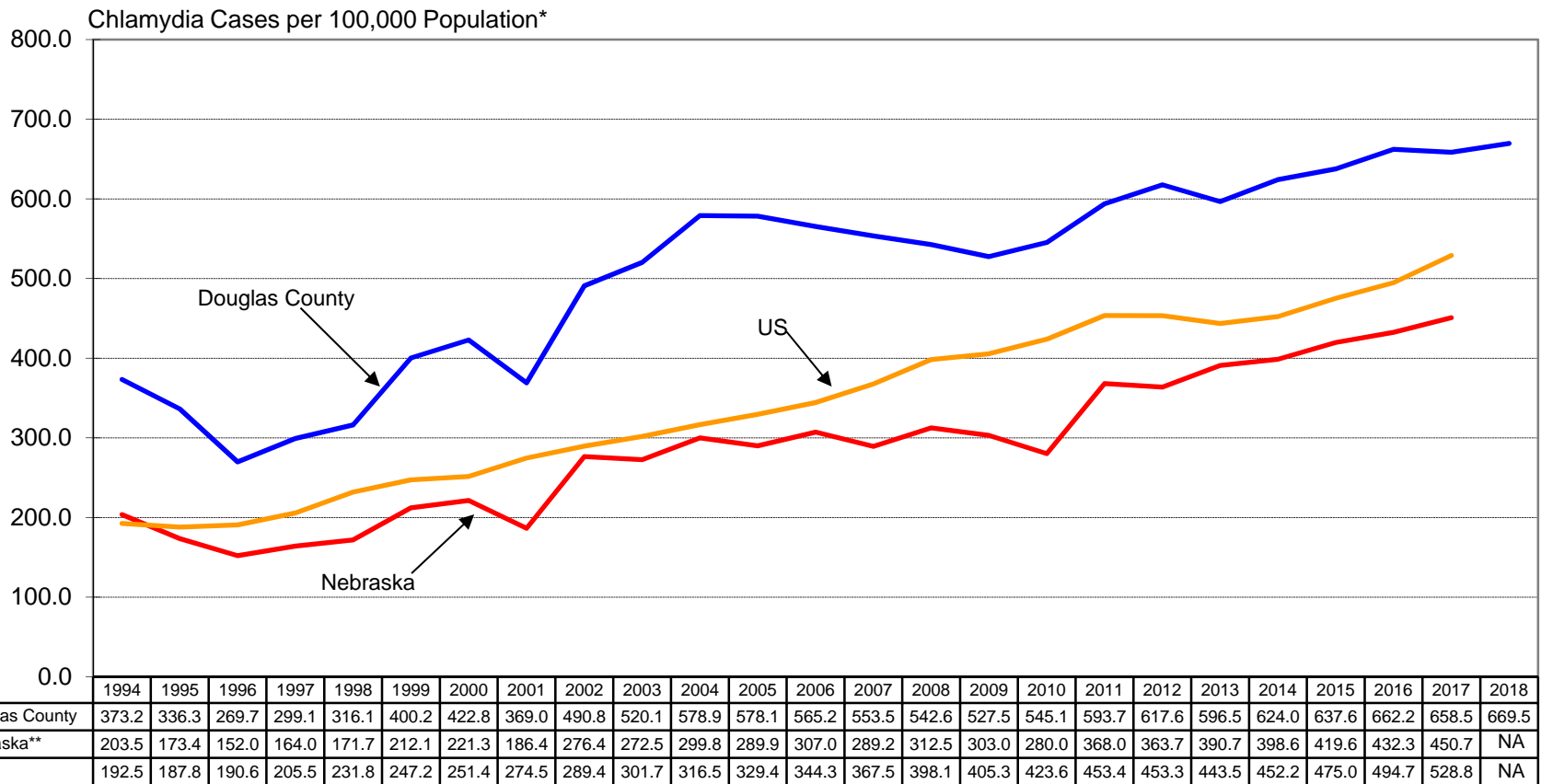
NA - The data was not available at this time.

Source: Douglas County STD
Based on Date of Report

Chlamydia Rates*

Douglas County, Nebraska, and US

1994-2018



* 1994-2009 populations used for rate calculations are Projection Estimates for Douglas County from Woods & Poole Economics, 2000 and 2010 which uses the US Decennial Census, and 2011-2018 which use the US Census Bureau Population Estimates Program.

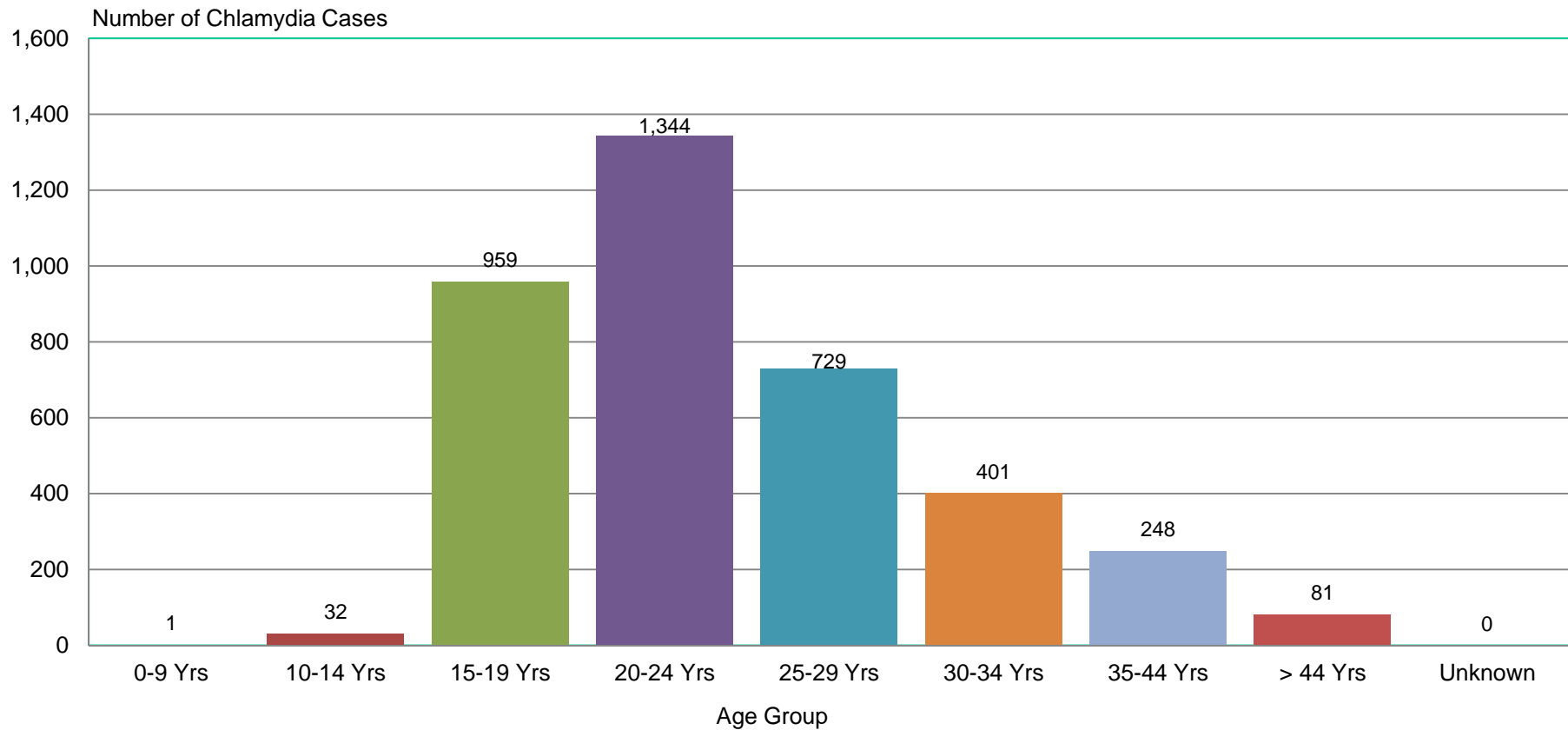
** Source: CDC Sexually Transmitted Diseases Surveillance

NA - The data was not available at this time.

Source: Douglas County STD
Based on Date of Report

Number of Chlamydia Cases by Age Group Douglas County, NE 2018

Total Cases = 3,795



Source: Douglas County STD
Based on Date of Report

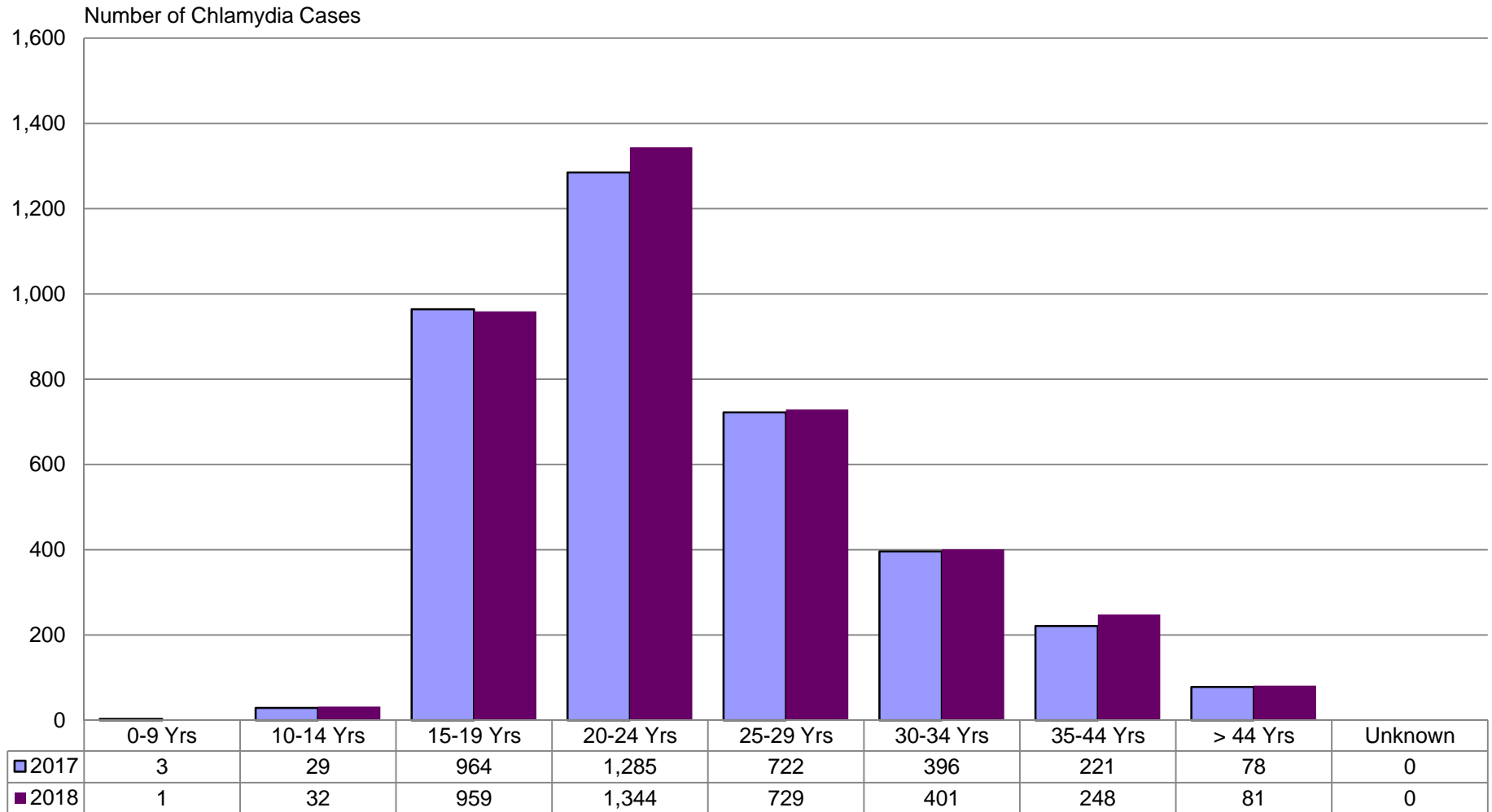
Douglas County Health Department
2/28/2019



Number of Chlamydia Cases by Age Group

Douglas County, NE

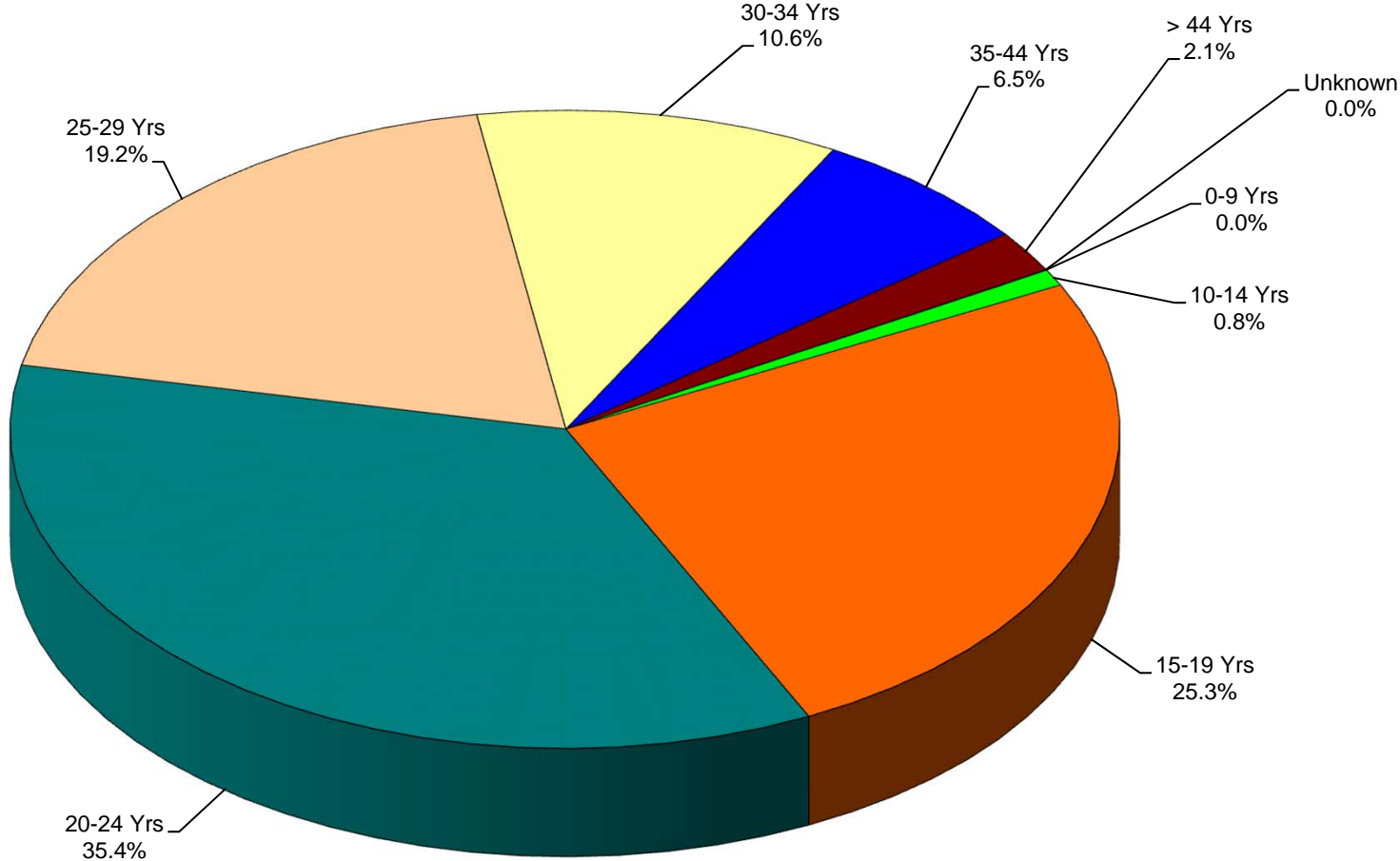
2017 - 2018



Source: Douglas County STD
Based on Date of Report

Chlamydia Cases by Age Group Douglas County, Nebraska 2018

Total Cases = 3,795

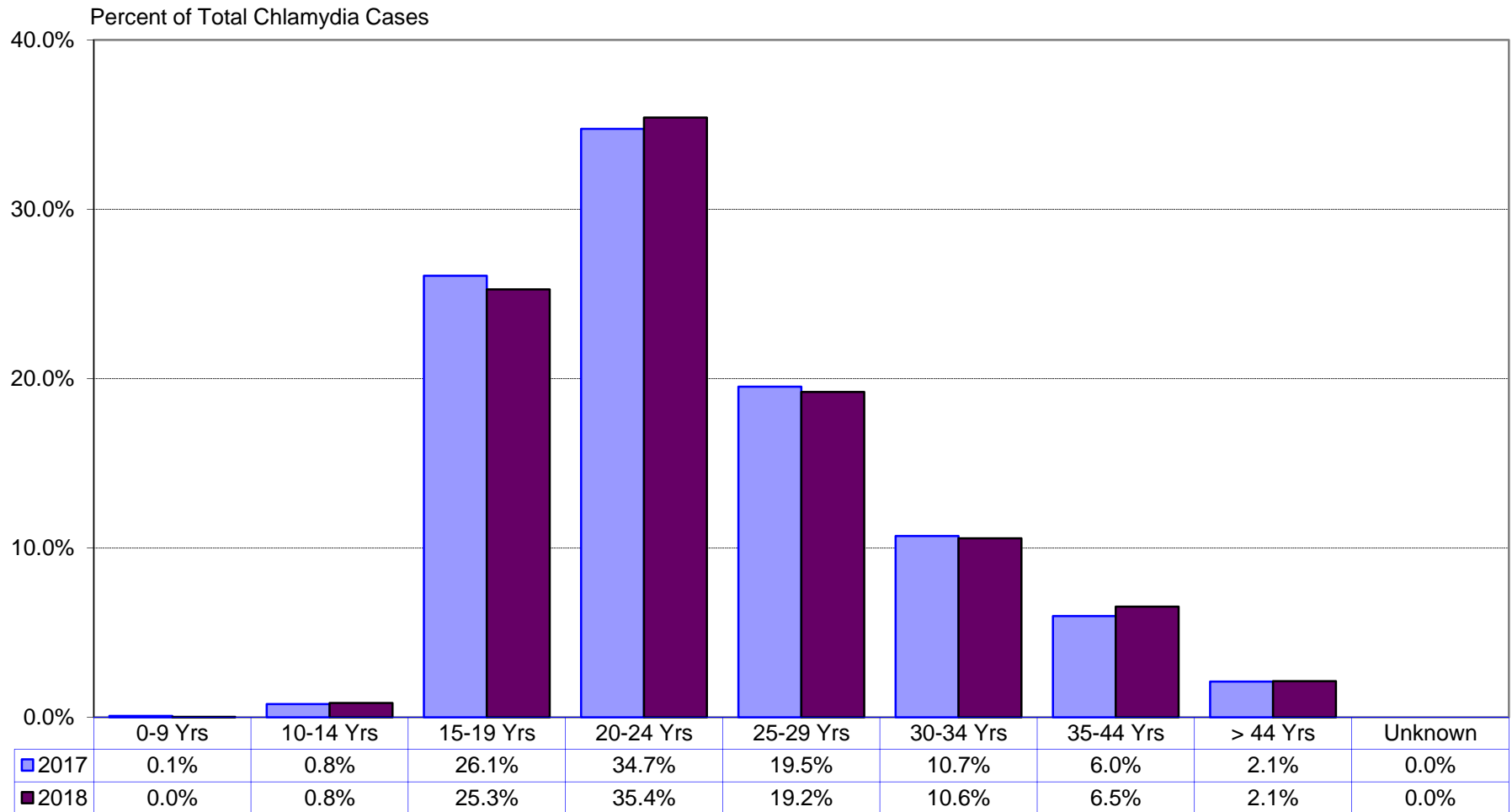


Source: Douglas County STD
Based on Date of Report

Percentage of Chlamydia Cases by Age Group

Douglas County, NE

2017 - 2018

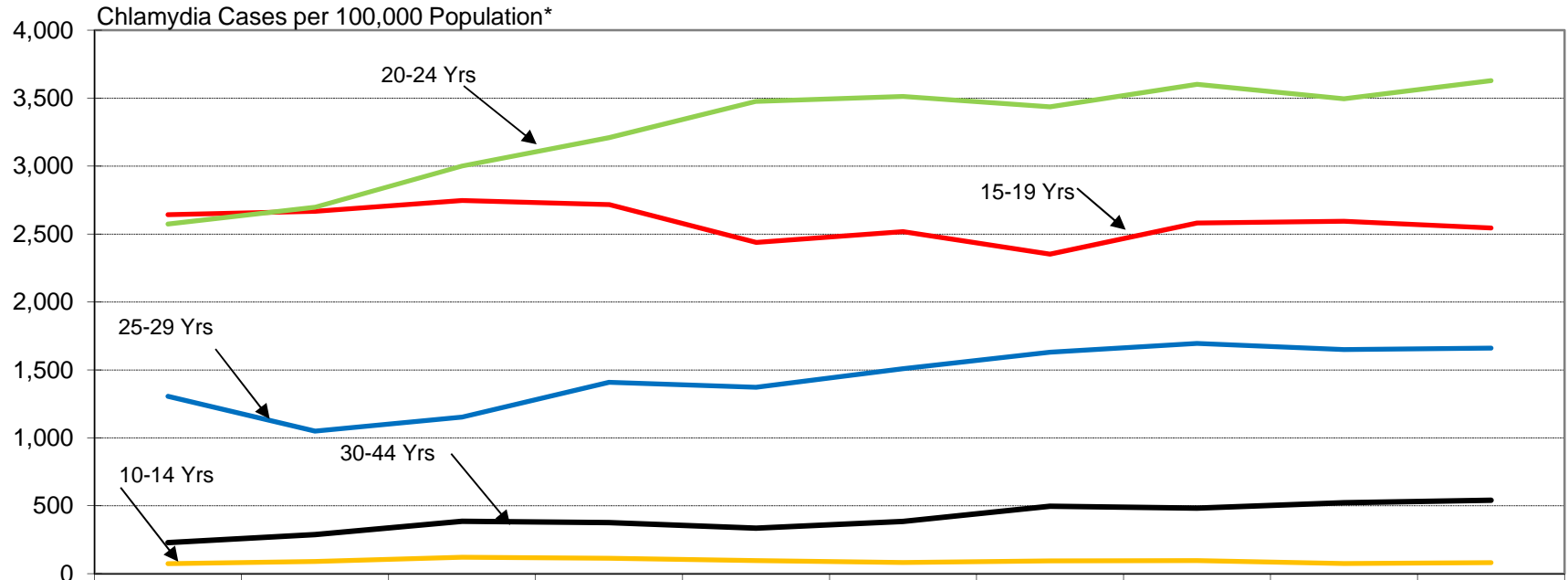


Source: Douglas County STD
Based on Date of Report

Chlamydia Rates* by Age Group

Douglas County, NE

2009 – 2018



	2009	2010	2011	2012	2013	2014	2015	2016	2017	2018
10-14 Yrs	73.4	90.2	121.1	114.0	97.0	82.1	94.0	96.2	74.5	81.4
15-19 Yrs	2,642.3	2,666.6	2,746.5	2,716.3	2,437.8	2,517.4	2,352.5	2,581.2	2,593.7	2,544.4
20-24 Yrs	2,573.1	2,697.6	3,000.0	3,209.7	3,475.4	3,512.4	3,435.7	3,602.0	3,494.8	3,628.2
25-29 Yrs	1,305.9	1,049.0	1,152.4	1,408.9	1,372.3	1,509.0	1,630.6	1,694.4	1,649.6	1,660.9
30-44 Yrs	228.5	288.1	386.0	376.1	334.8	384.9	496.6	483.1	522.2	540.9

Populations used for rate calculations are Projection Estimates for Douglas County from Woods & Poole Economics except for 2010 which uses the US Decennial Census, and 2011-2018 which use the US Census Bureau Population Estimates Program.

Source: Douglas County STD
Based on Date of Report

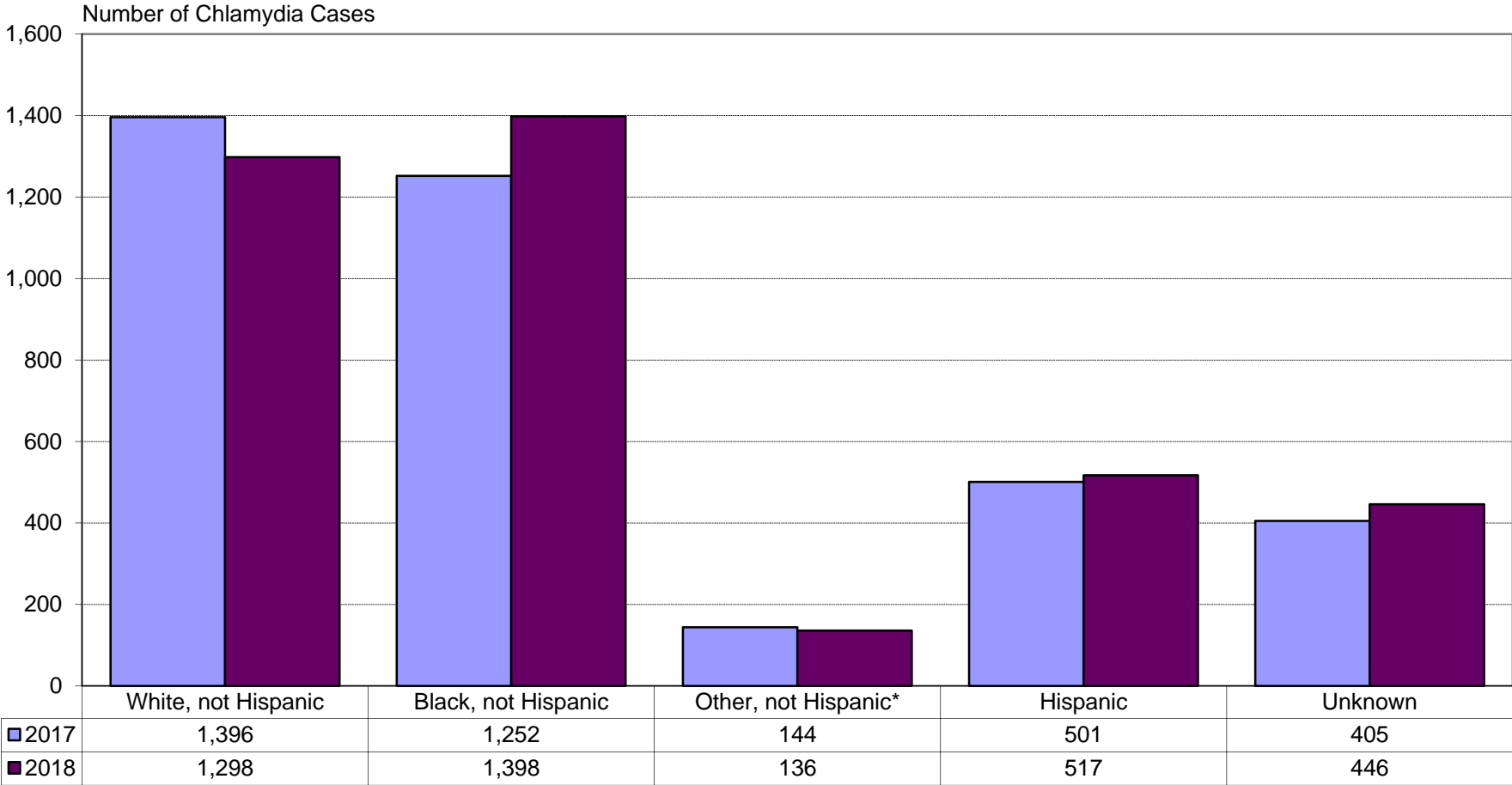
Douglas County Health Department
07/10/2019



Number of Chlamydia Cases by Race/Ethnicity

Douglas County, NE

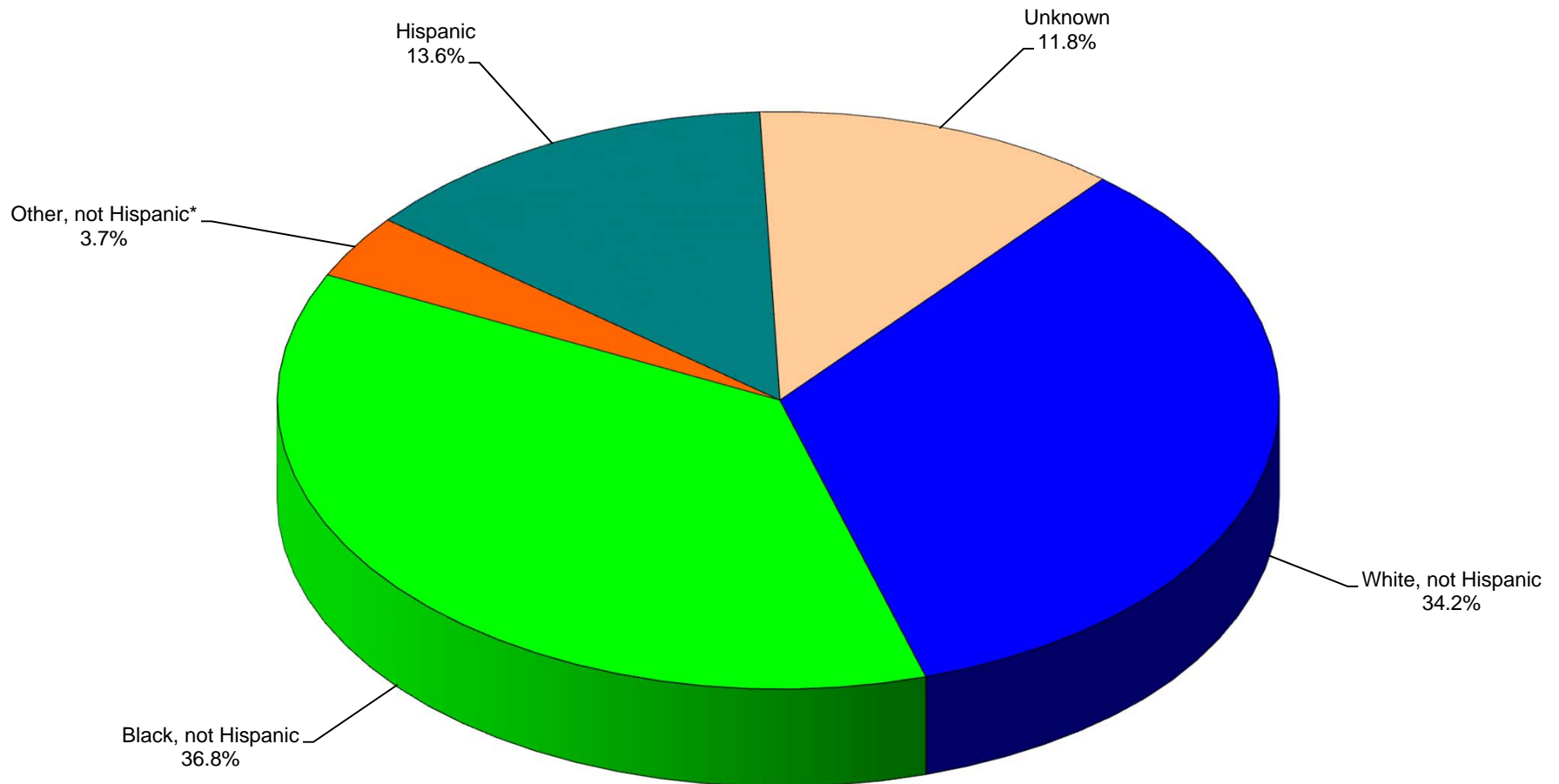
2017 - 2018



* Includes American Indian, Asian, and other races previously unmentioned that were specified as not Hispanic.
 Source: Douglas County STD
 Based on Date of Report

Chlamydia Cases by Race/Ethnicity Douglas County, Nebraska 2018

Total Cases = 3,795



* Includes American Indian, Asian, and other races previously unmentioned that were specified as not Hispanic.

Source: Douglas County STD
Based on Date of Report

Percentage of Chlamydia Cases by Race/Ethnicity

Douglas County, NE

2017 - 2018



* Includes American Indian, Asian, and other races previously unmentioned that were specified as not Hispanic.
 Source: Douglas County STD
 Based on Date of Report

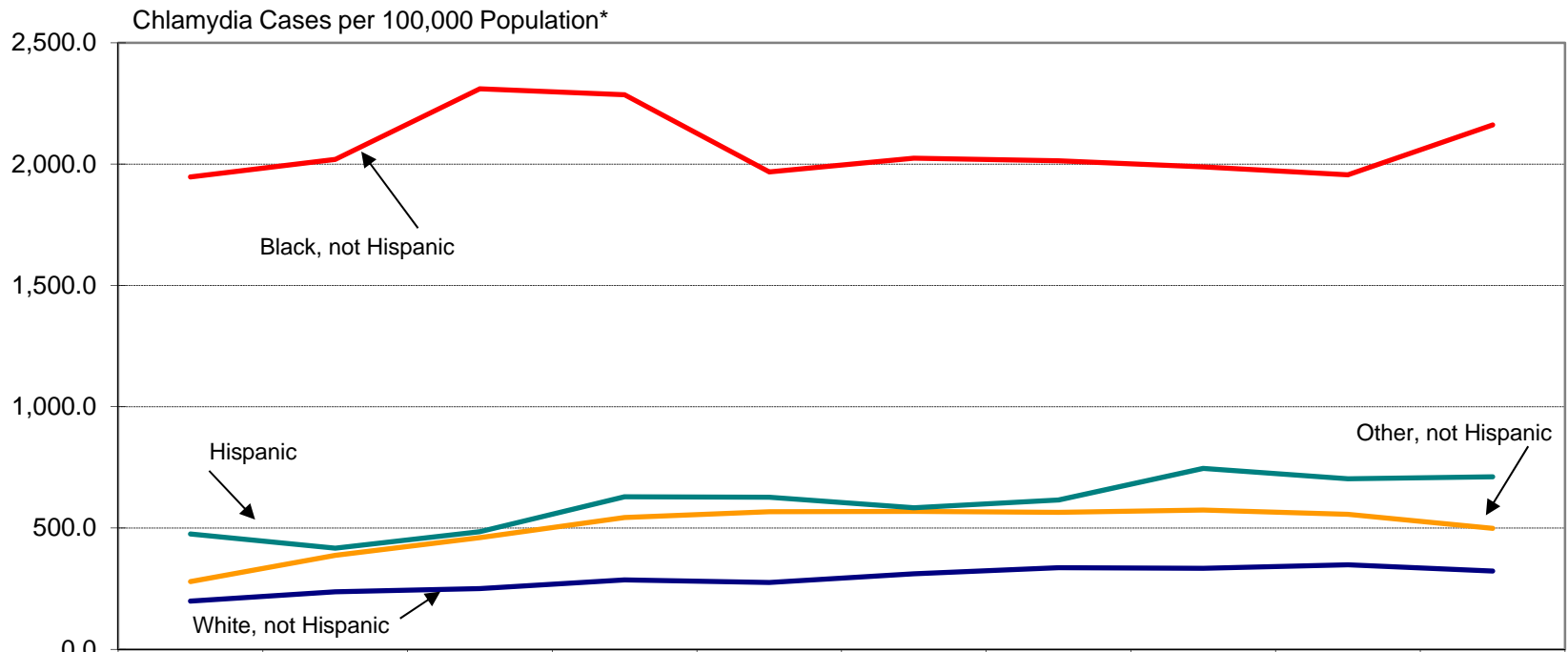
Douglas County Health Department
 2/28/2019



Chlamydia Rates* by Race/Ethnicity

Douglas County, NE

2009-2018



	2009	2010	2011	2012	2013	2014	2015	2016	2017	2018
— White, not Hispanic	198.9	236.9	250.6	286.4	275.7	311.5	336.2	334.1	348.6	322.7
— Black, not Hispanic	1,946.8	2,019.0	2,310.3	2,285.9	1,967.4	2,024.0	2,013.2	1,988.2	1,955.6	2,161.1
— Other, not Hispanic**	279.1	387.1	460.4	543.2	567.4	568.6	564.6	574.2	556.8	498.8
— Hispanic	475.5	416.9	484.8	628.8	626.8	583.8	615.5	745.8	702.9	710.9

* Populations used for rate calculations are Projection Estimates for Douglas County from Woods & Poole Economics except for 2010 which uses the US Decennial Census, and 2011-2018 which use the US Census Bureau Population Estimates Program.

** Includes American Indian, Asian, and other races previously unmentioned that were specified as not Hispanic.

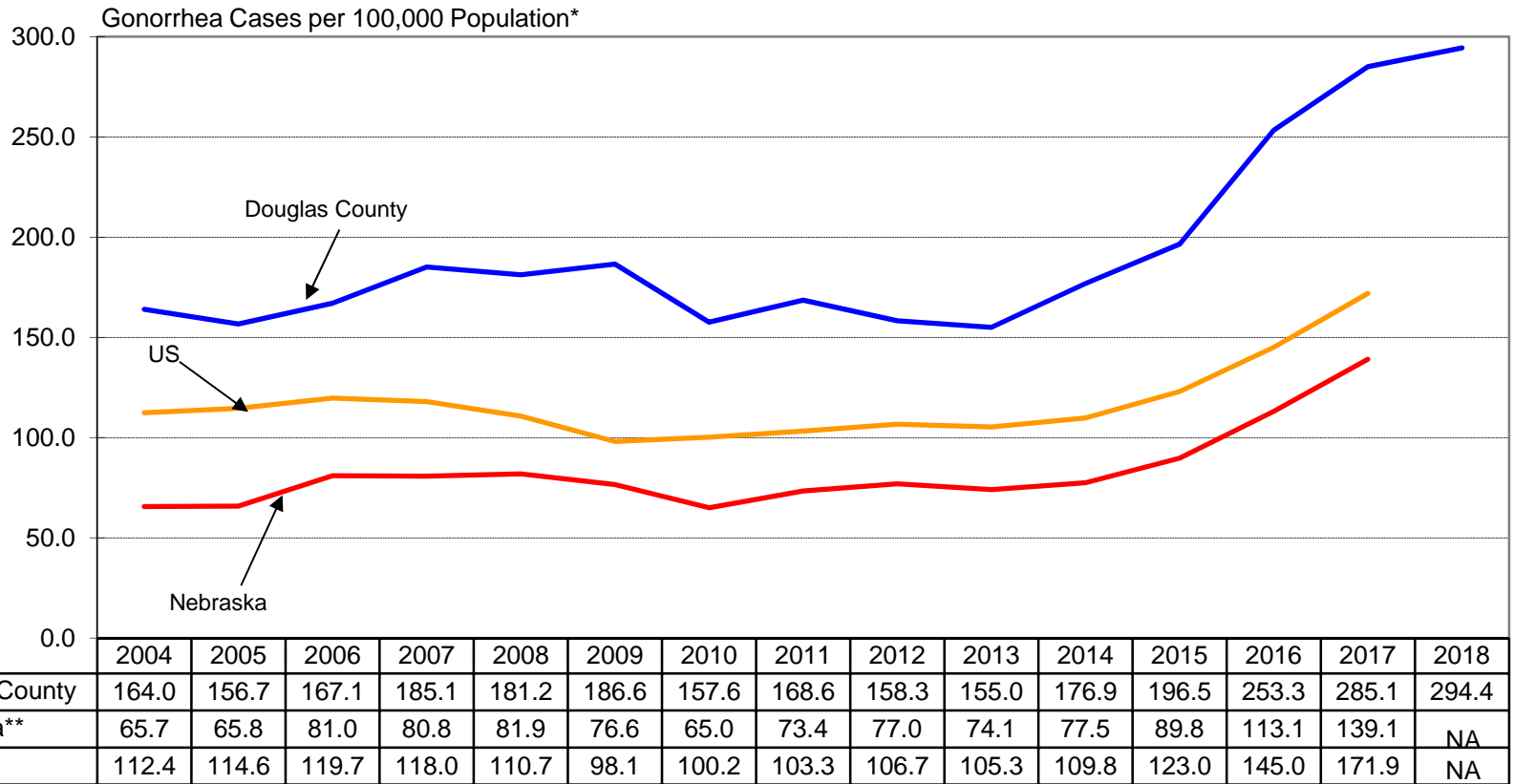
Source: Douglas County STD

Based on Date of Report

Gonorrhea Rates*

Douglas County, Nebraska, and US

2004-2018



* 2004-2009 populations used for rate calculations are Projection Estimates for Douglas County from Woods & Poole Economics, 2000 and 2010 which uses the US Decennial Census, and 2011-2018 which use the US Census Bureau Population Estimates Program.

** Source: CDC Sexually Transmitted Diseases Surveillance

NA - The data was not available at this time.

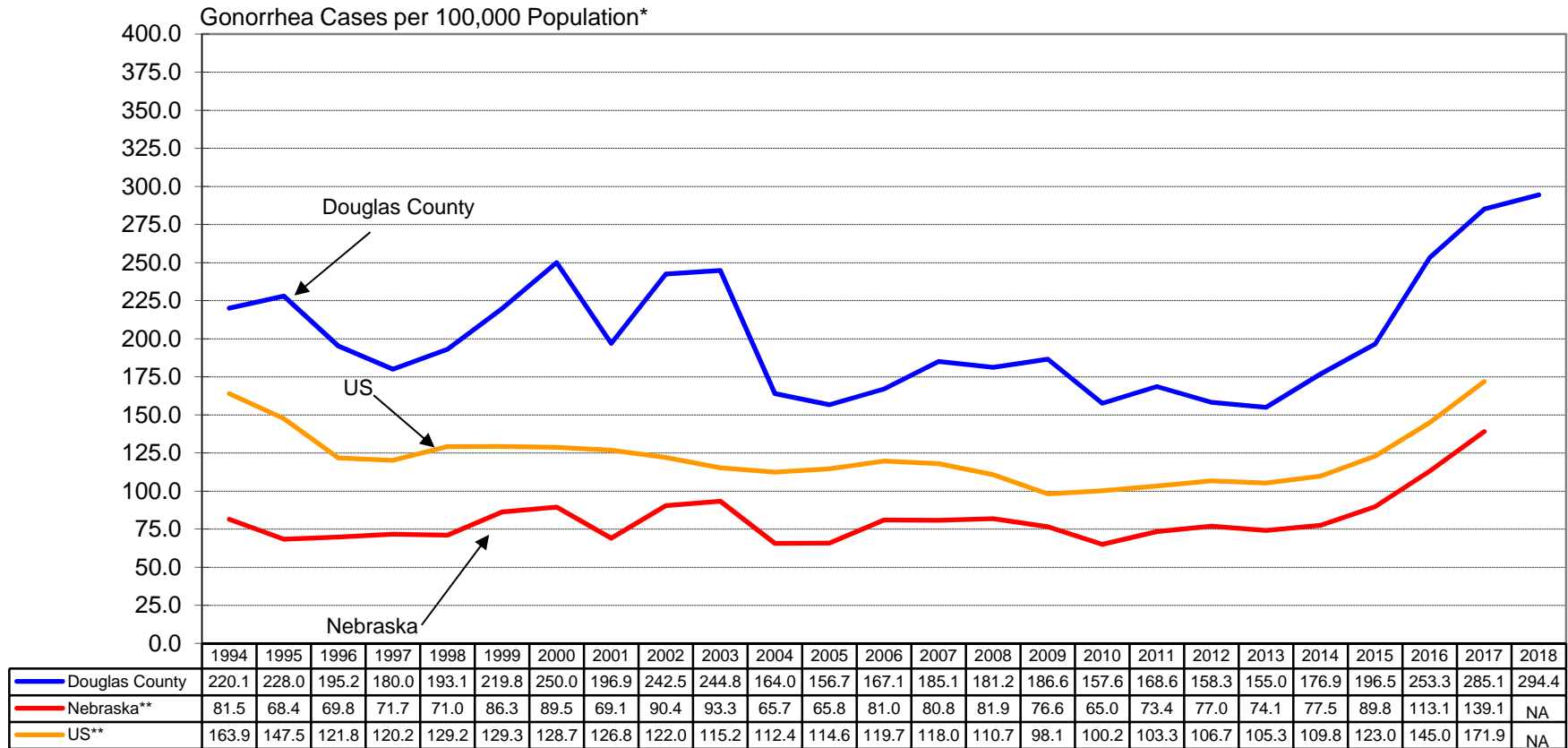
Source: Douglas County STD
Based on Date of Report



Gonorrhea Rates*

Douglas County, Nebraska, and US

1994-2018



* 1994-2009 populations used for rate calculations are Projection Estimates for Douglas County from Woods & Poole Economics, 2000 and 2010 which uses the US Decennial Census, and 2011-2018 which use the US Census Bureau Population Estimates Program.

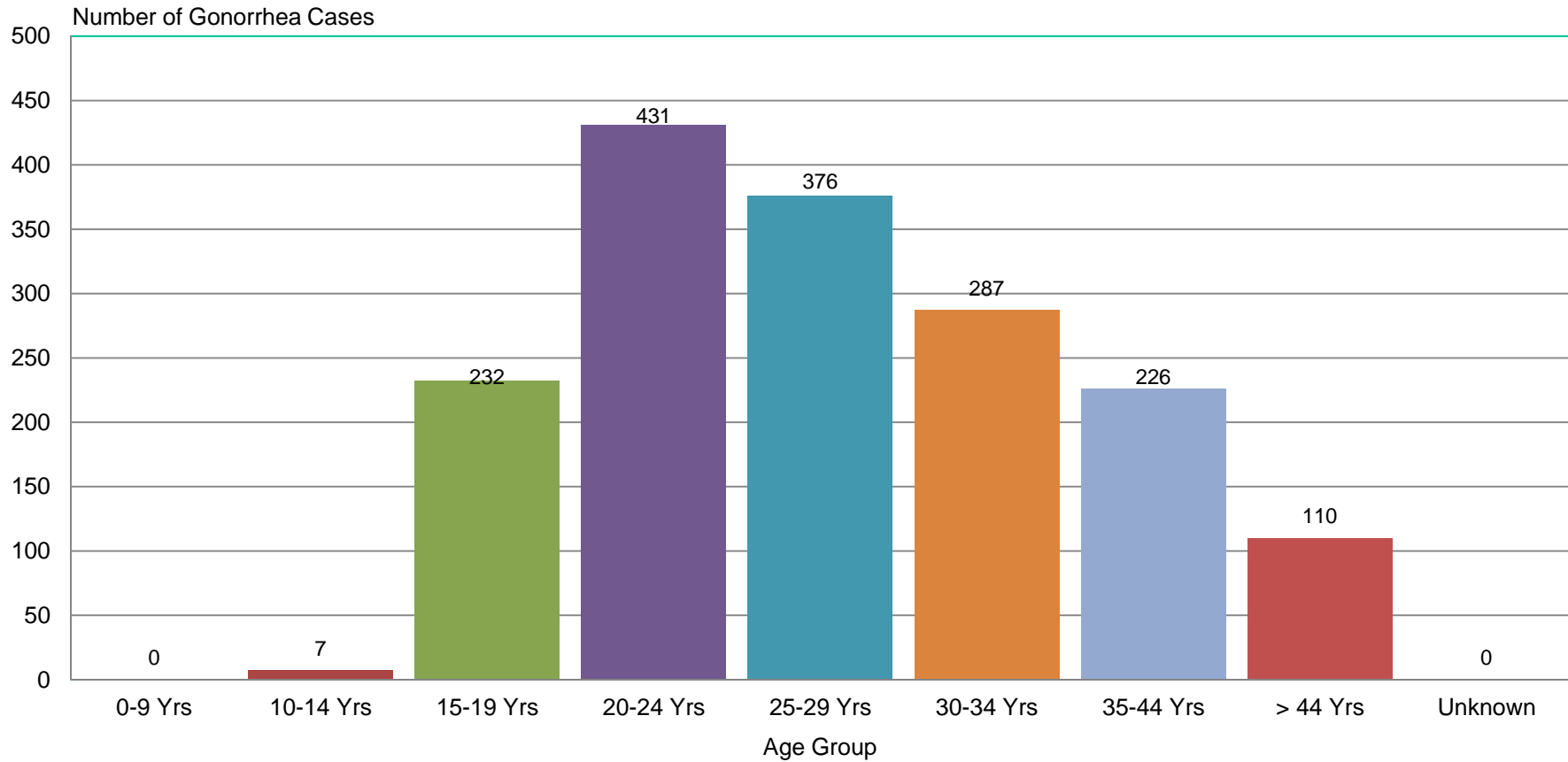
** Source: CDC Sexually Transmitted Diseases Surveillance

NA - The data was not available at this time.

Source: Douglas County STD
Based on Date of Report

Number of Gonorrhea Cases by Age Group Douglas County, NE 2018

Total Cases = 1,669

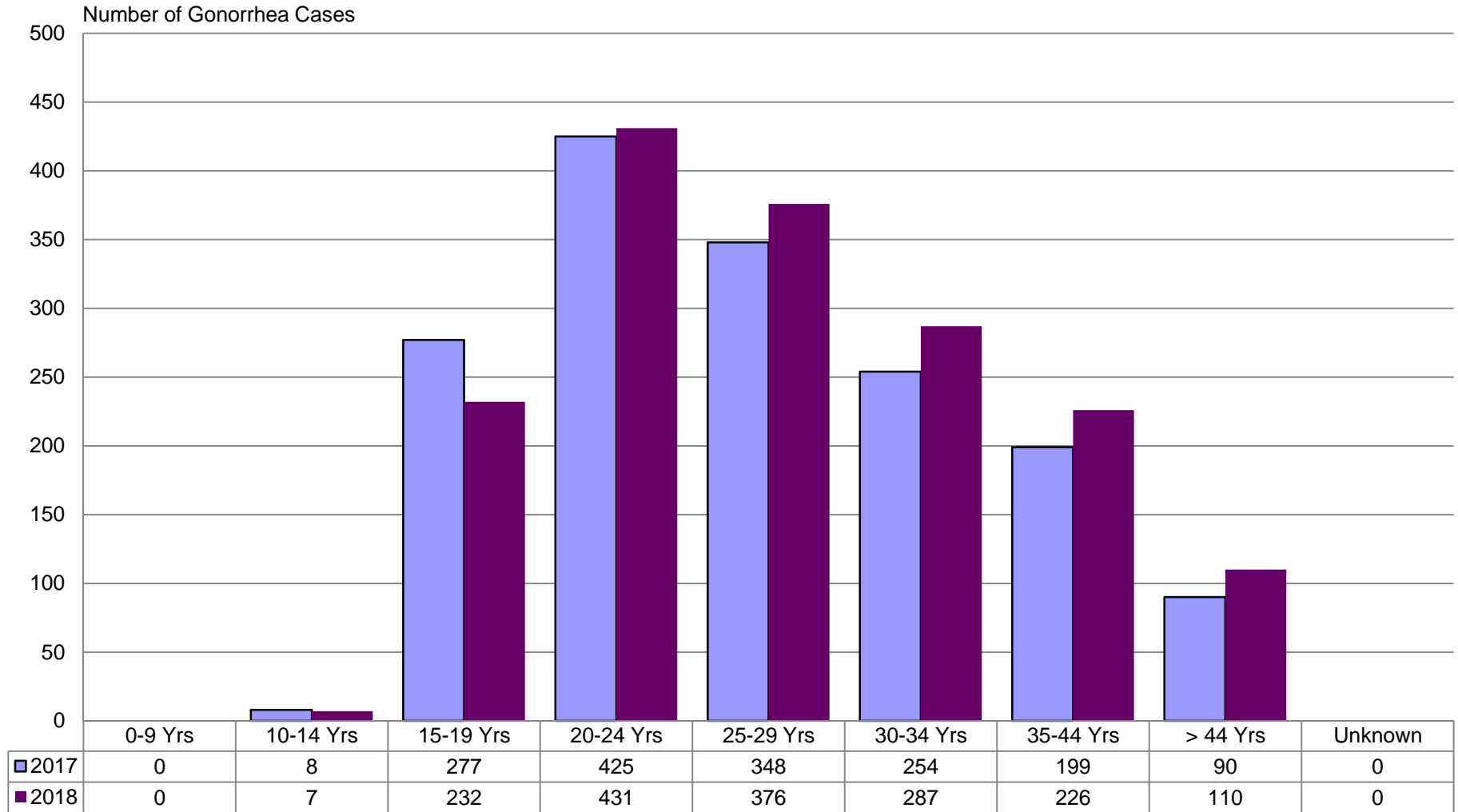


Source: Douglas County STD
Based on Date of Report

Number of Gonorrhea Cases by Age Group

Douglas County, NE

2017 - 2018



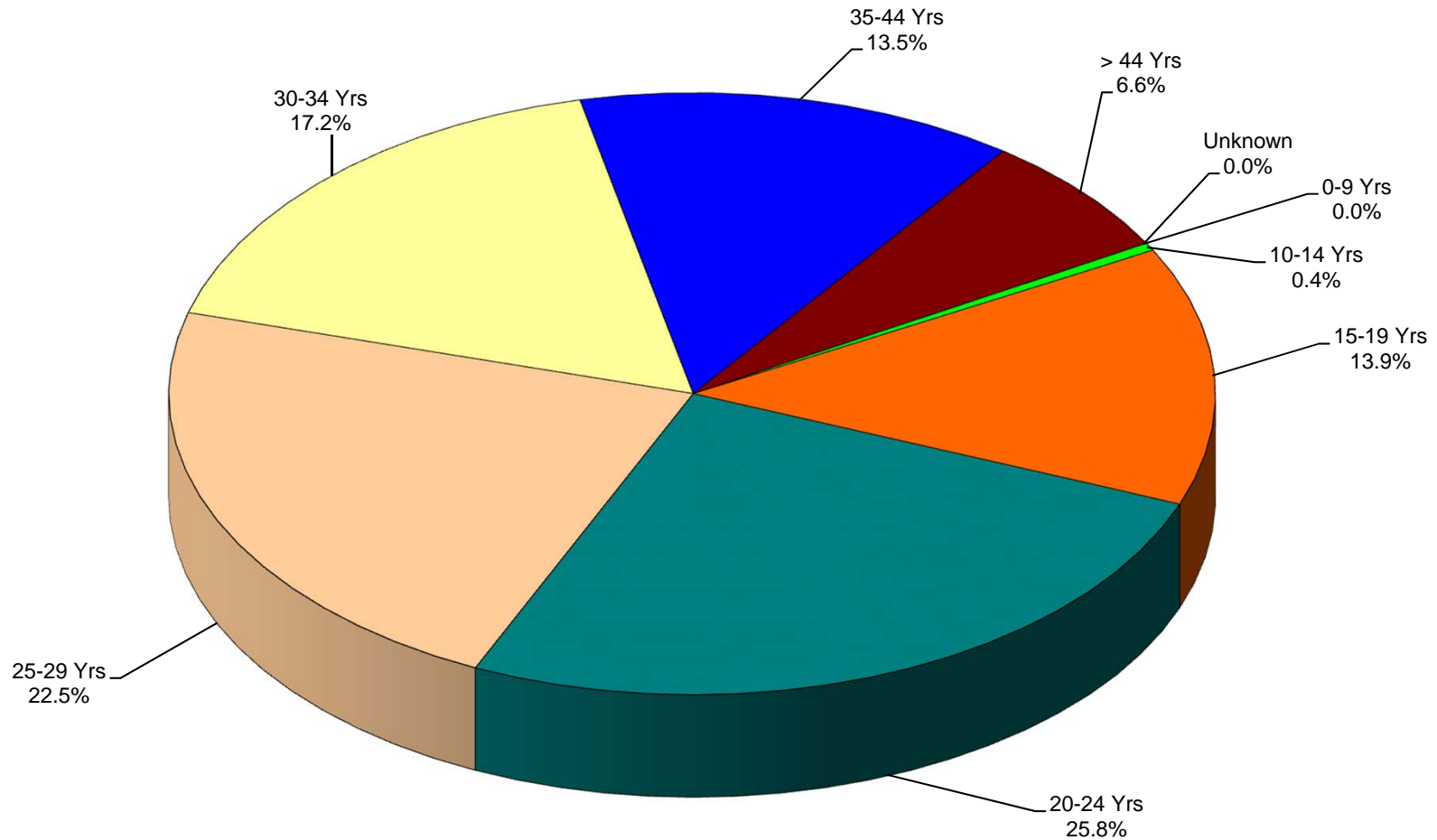
Source: Douglas County STD
Based on Date of Report

Gonorrhea Cases by Age Group

Douglas County, Nebraska

2018

Total Cases = 1,669

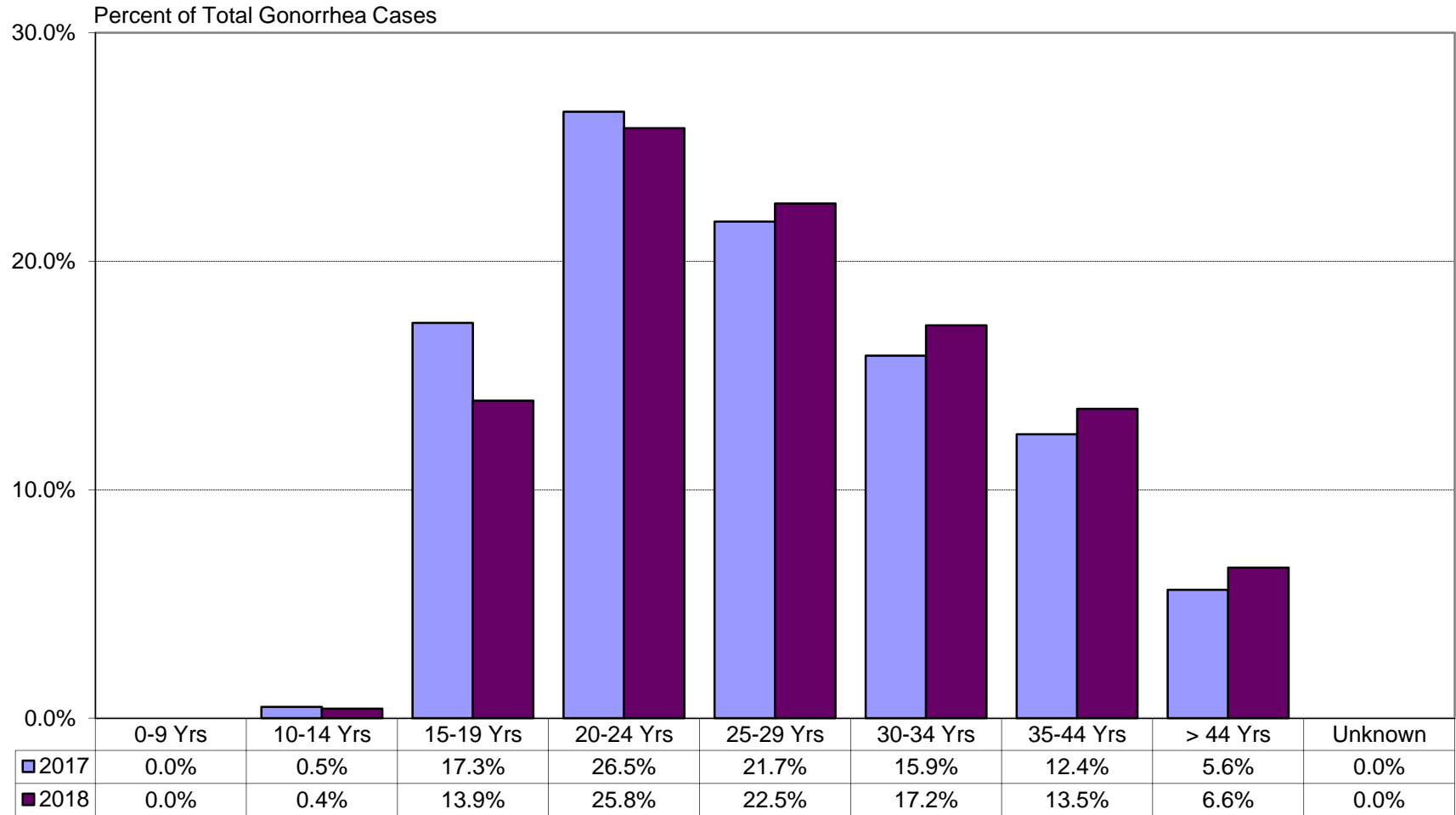


Source: Douglas County STD
Based on Date of Report

Percentage of Gonorrhea Cases by Age Group

Douglas County, NE

2017 - 2018

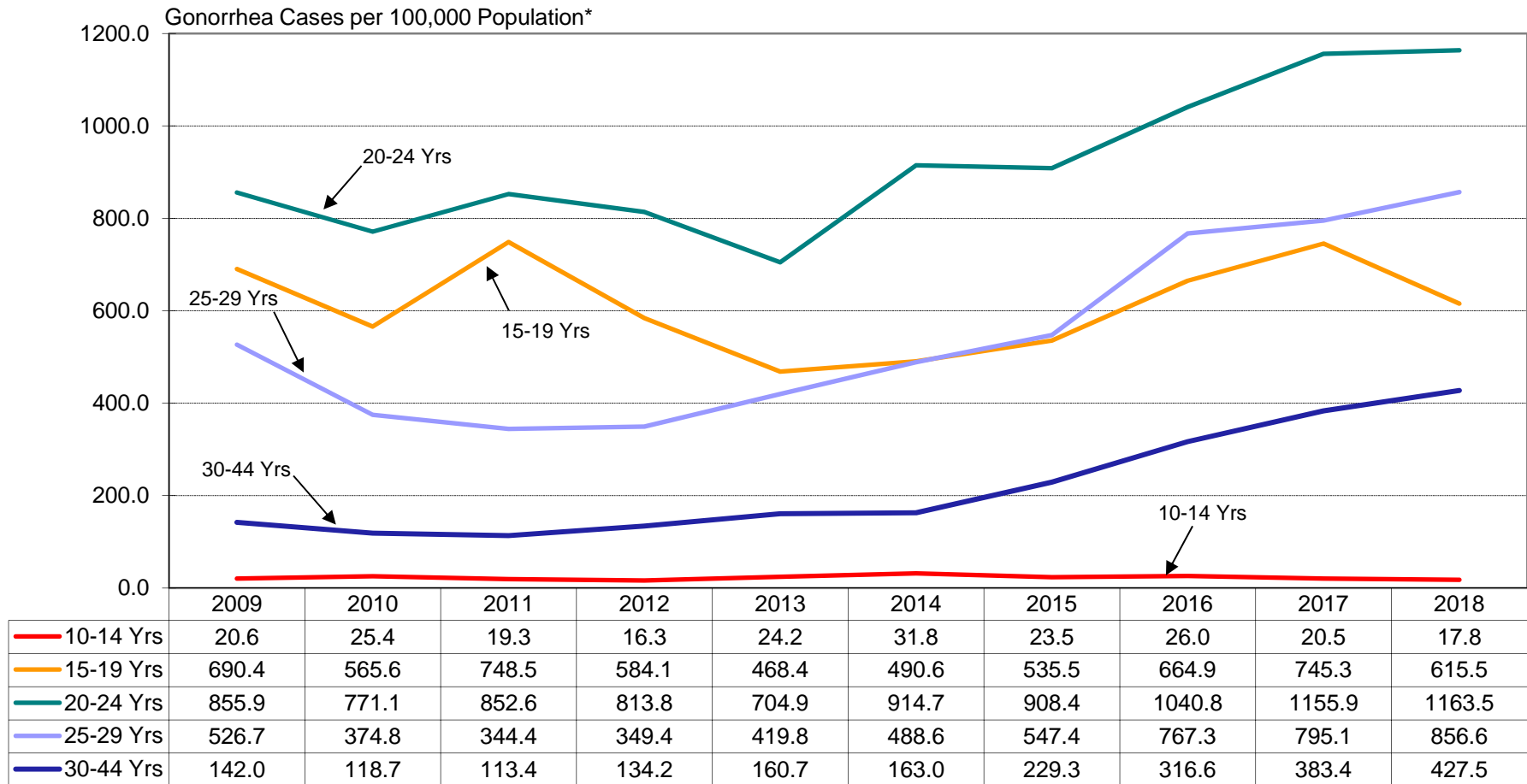


Source: Douglas County STD
Based on Date of Report

Gonorrhea Rates* by Age Group

Douglas County, NE

2009 – 2018



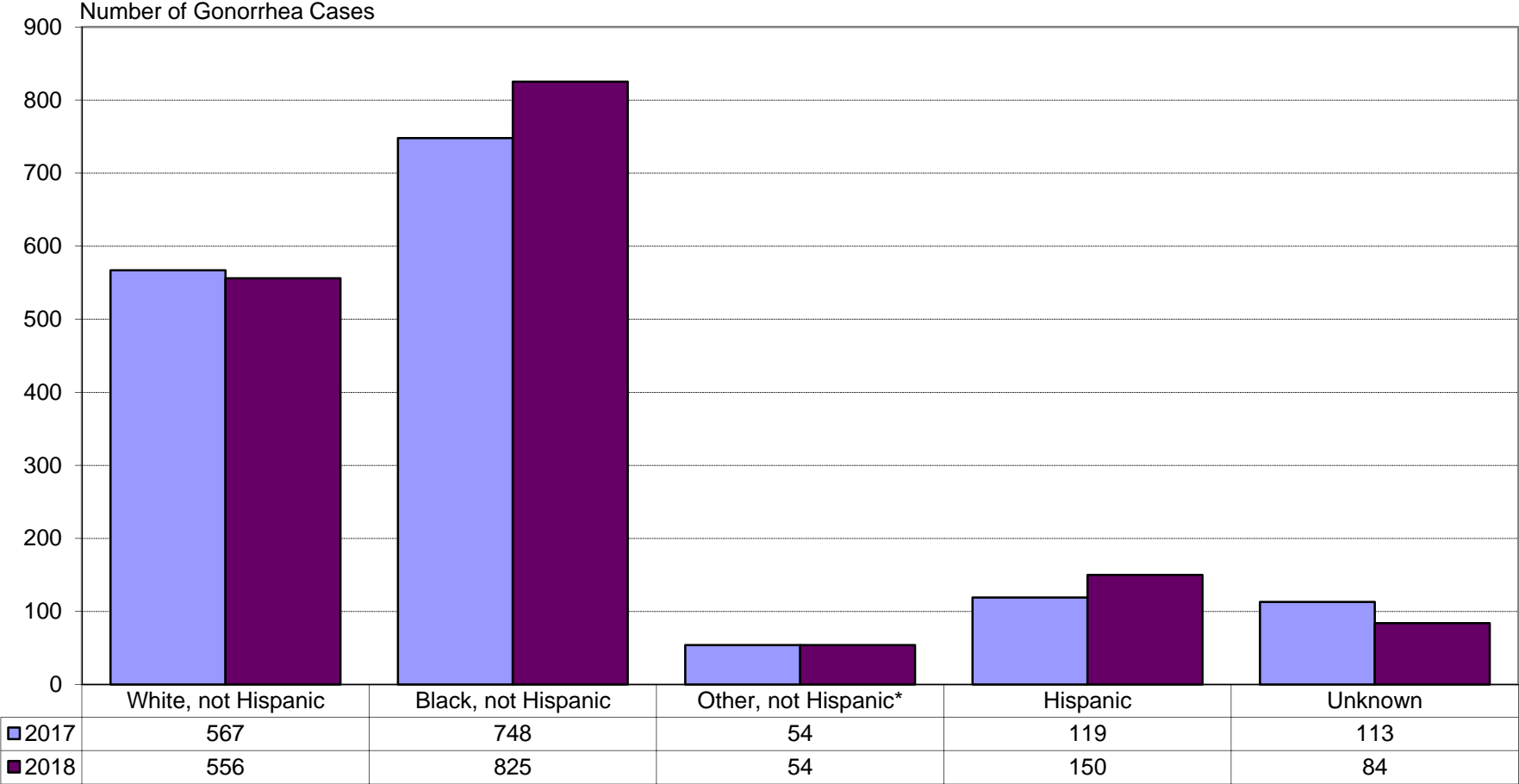
* Populations used for rate calculations are Projection Estimates for Douglas County from Woods & Poole Economics except for 2010 which uses the US Decennial Census, and 2011-2018 which use the US Census Bureau Population Estimates Program.

Source: Douglas County STD
Based on Date of Report

Number of Gonorrhea Cases by Race/Ethnicity

Douglas County, NE

2017 - 2018

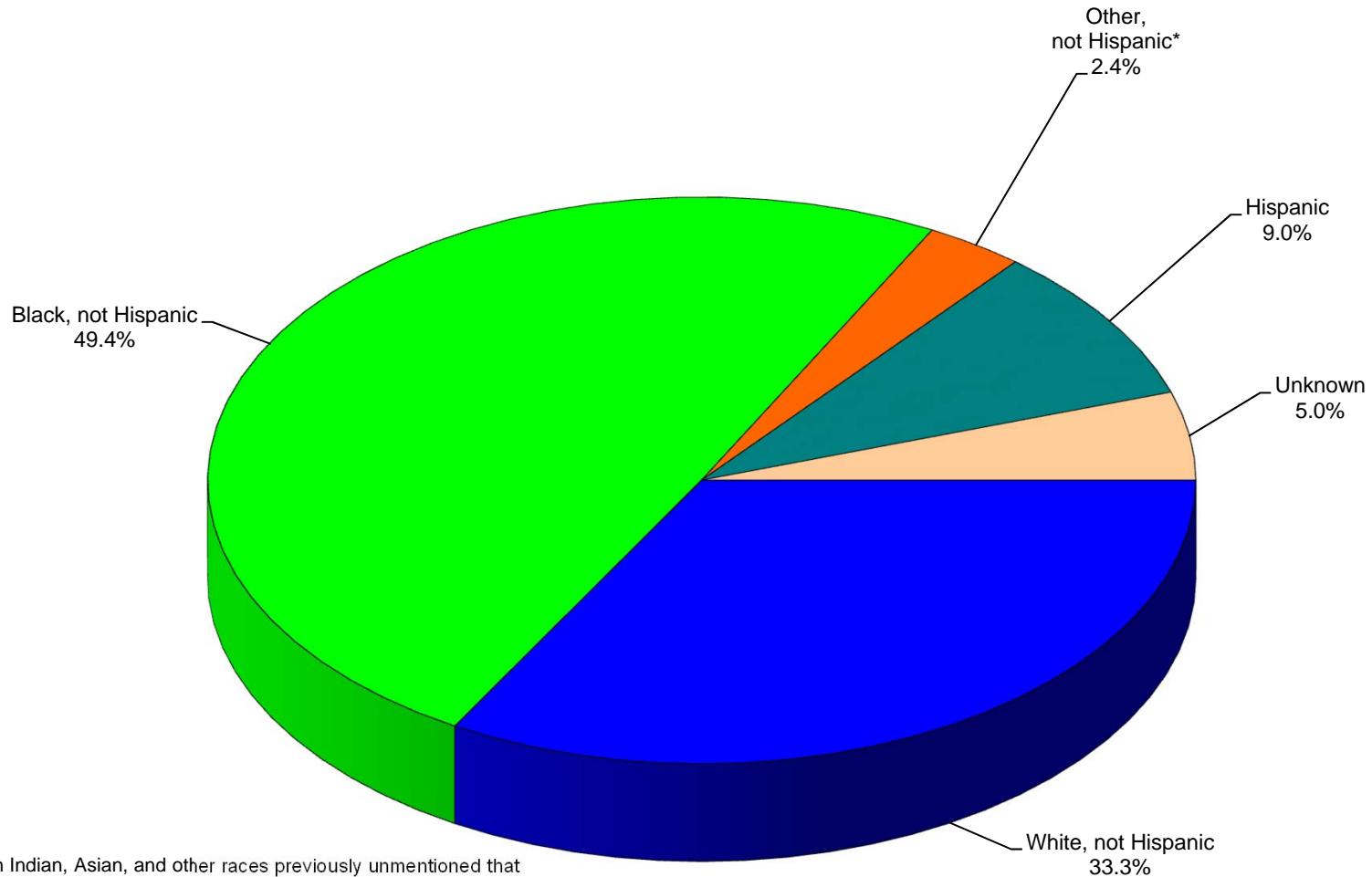


* Includes American Indian, Asian, and other races previously unmentioned that were specified as not Hispanic.

Source: Douglas County STD
Based on Date of Report

Gonorrhea Cases by Race/Ethnicity Douglas County, Nebraska 2018

Total Cases = 1,669



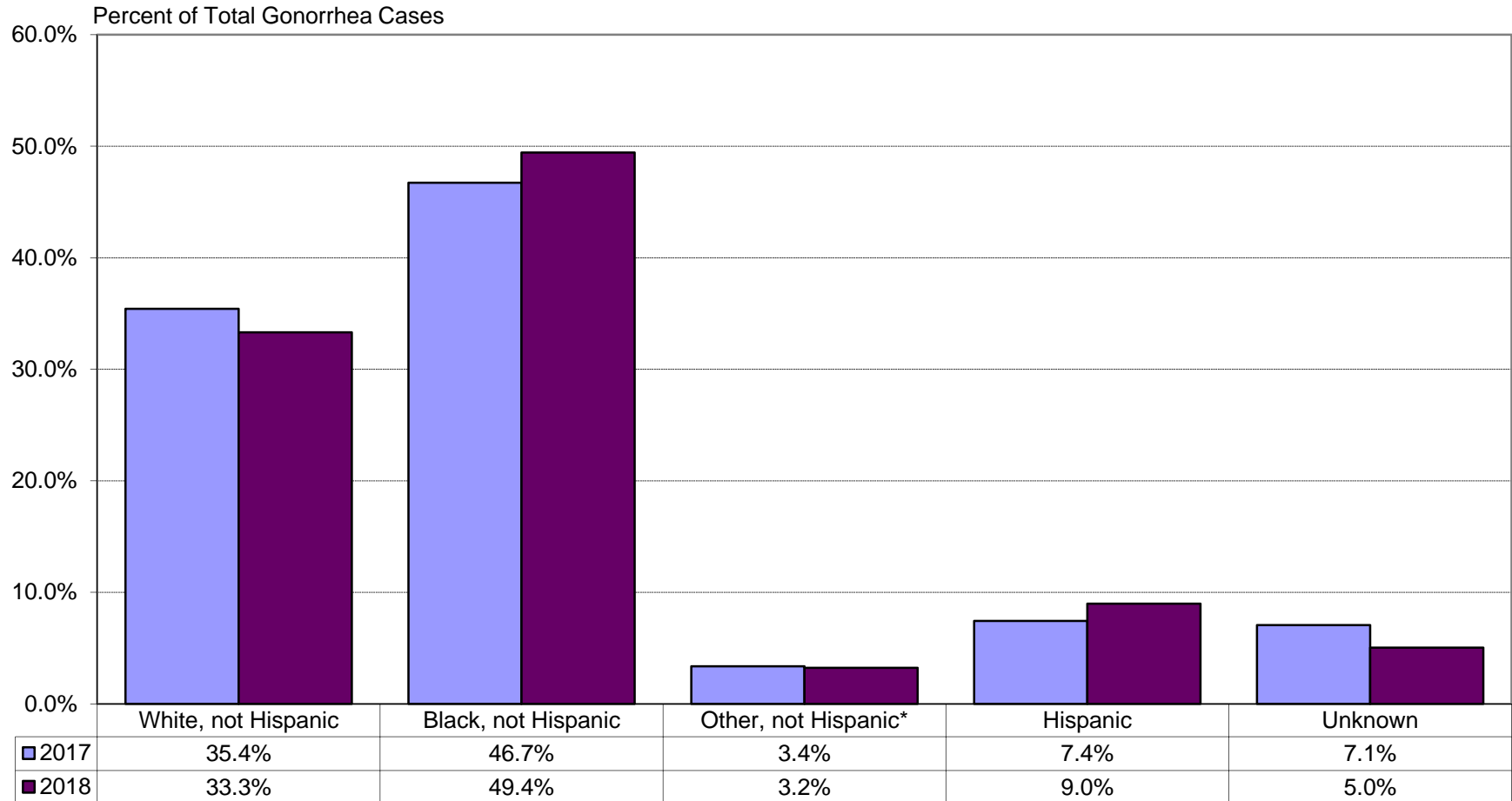
* Includes American Indian, Asian, and other races previously unmentioned that were specified as not Hispanic.

Source: Douglas County STD
Based on Date of Report

Percentage of Gonorrhea Cases by Race/Ethnicity

Douglas County, NE

2017 - 2018



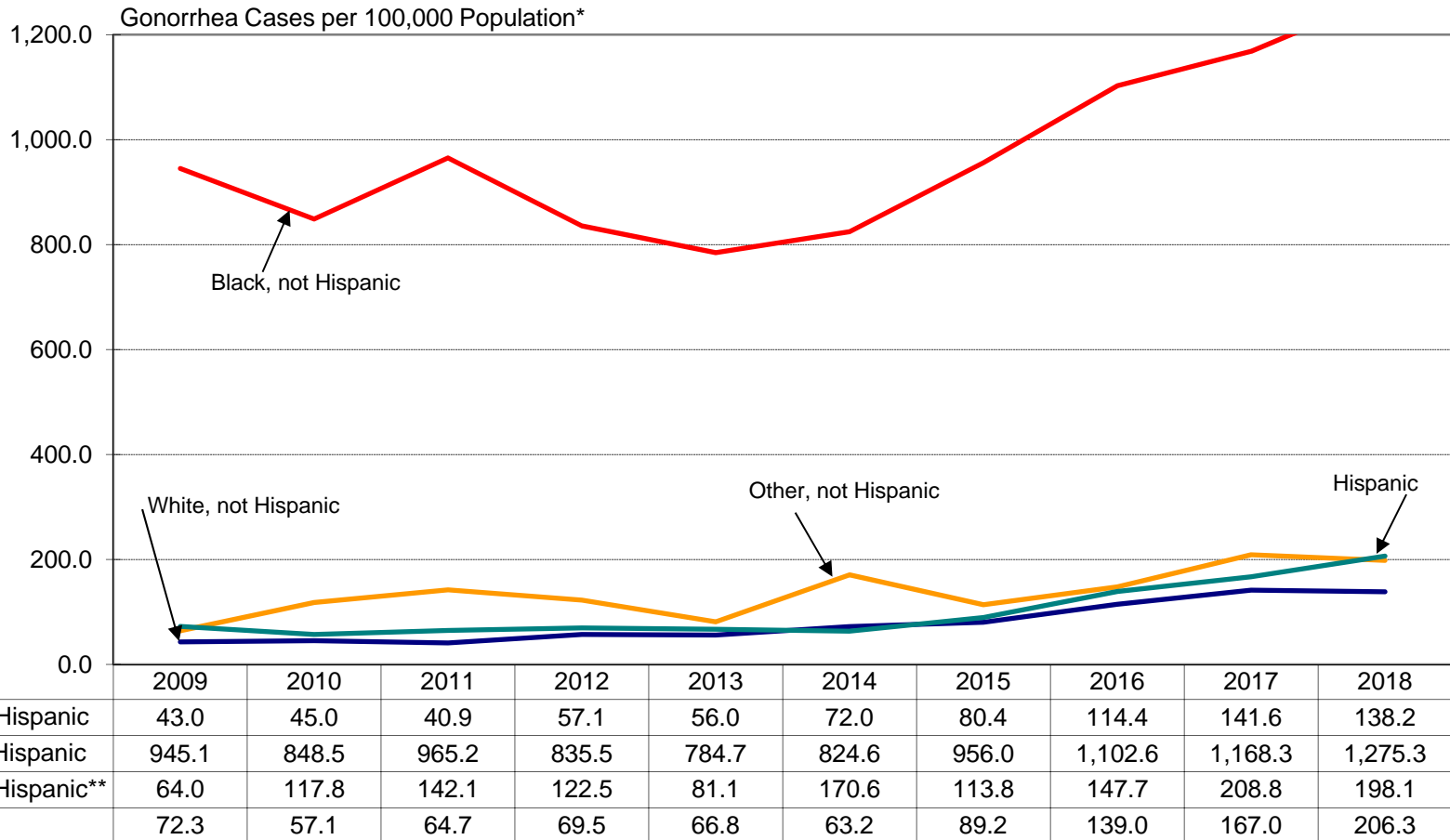
* Includes American Indian, Asian, and other races previously unmentioned that were specified as not Hispanic.

Source: Douglas County STD
Based on Date of Report

Gonorrhea Rates* by Race/Ethnicity

Douglas County, NE

2009 – 2018



* Populations used for rate calculations are Projection Estimates for Douglas County from Woods & Poole Economics except for 2010 which uses the US Decennial Census, and 2011-2018 which use the US Census Bureau Population Estimates Program.

** Includes American Indian, Asian, and other races previously unmentioned that were specified as not Hispanic

Source: Douglas County STD
Based on Date of Report

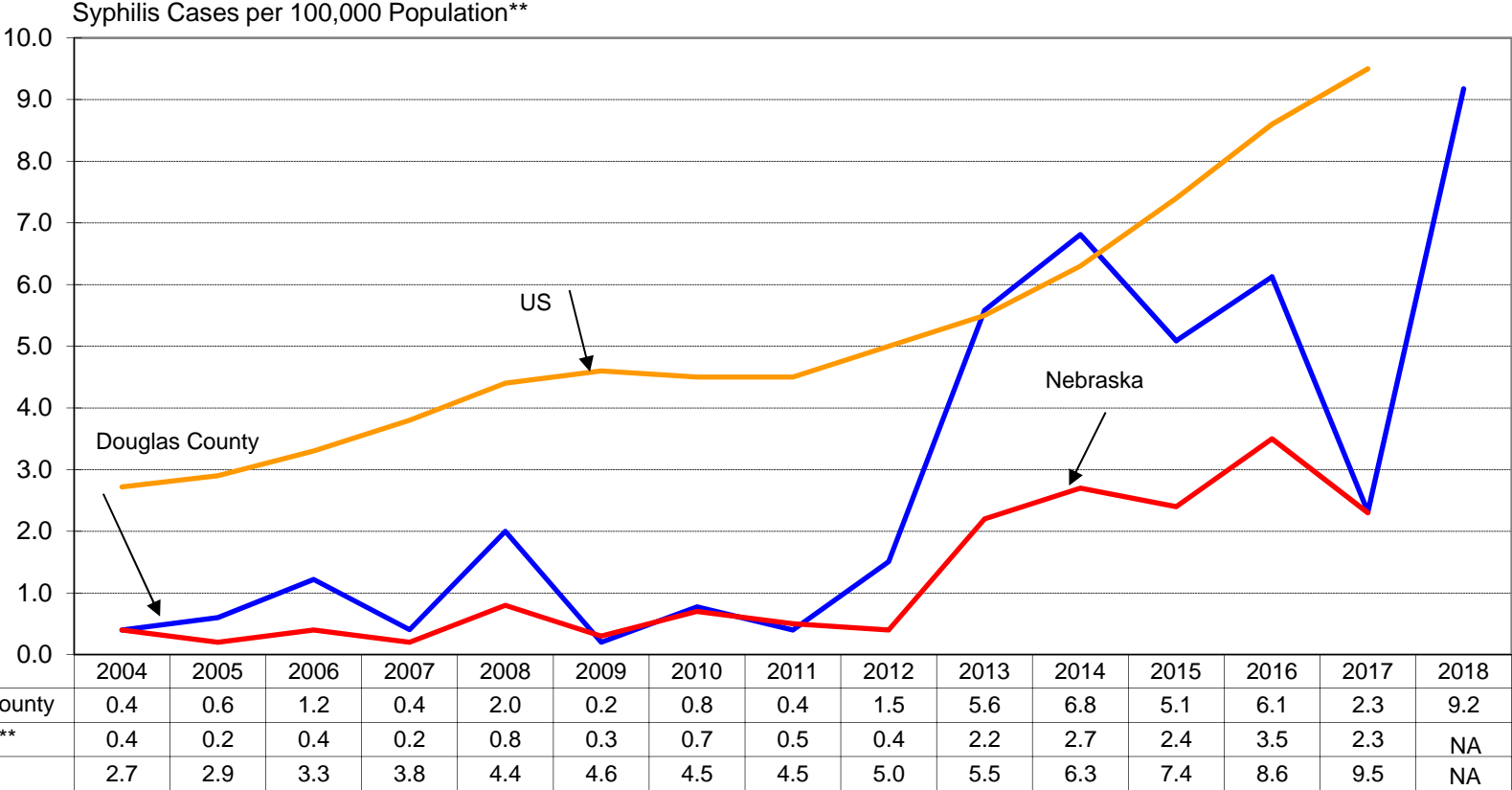
Douglas County Health Department
07/11/2019



Syphilis* Rates**

Douglas County, Nebraska, and US

2004-2018



* Primary and Secondary Syphilis

** Populations used for rate calculations are Projection Estimates for Douglas County from Woods & Poole Economics except for 2010 which uses the US Decennial Census, and 2011-2018 which use the US Census Bureau Population Estimates Program.

*** Source: CDC Sexually Transmitted Diseases Surveillance

NA – Data not available at this time.

Source: Douglas County STD

Based on Date of Report

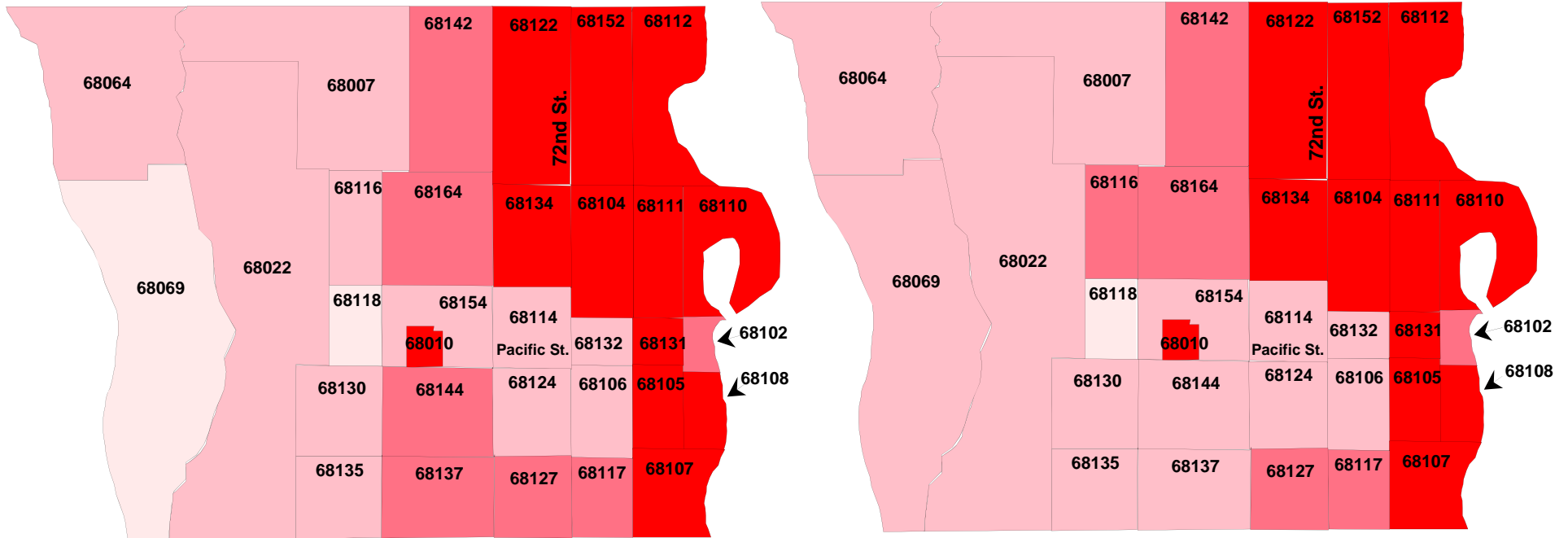
Chlamydia Rates* by ZIP Code

Both Genders, 15 to 24 Age Group

Douglas County, Nebraska - Five Year Average

2013 - 2017

2014 - 2018



Rates per 100,000*

- 3000 & Greater
- 2000 to 3000
- 1000 to 2000
- Less than 1000

Populations for 2013-2018 are based on 2010 US Decennial Census.
 Source: Douglas County STD
 Based on Date of Report

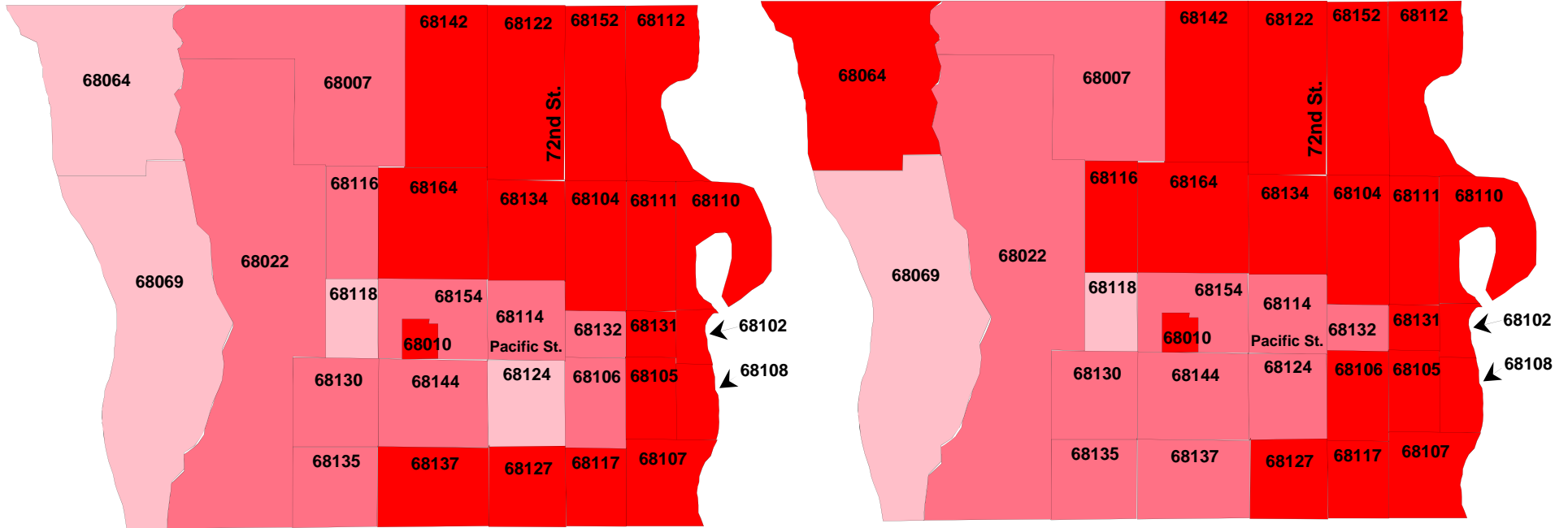
Chlamydia Rates* by ZIP Code

Females, 15 to 24 Age Group

Douglas County, Nebraska - Five Year Average

2013 - 2017

2014 - 2018



Populations for 2013-2018 are based on 2010 US Decennial Census.
 Source: Douglas County STD
 Based on Date of Report

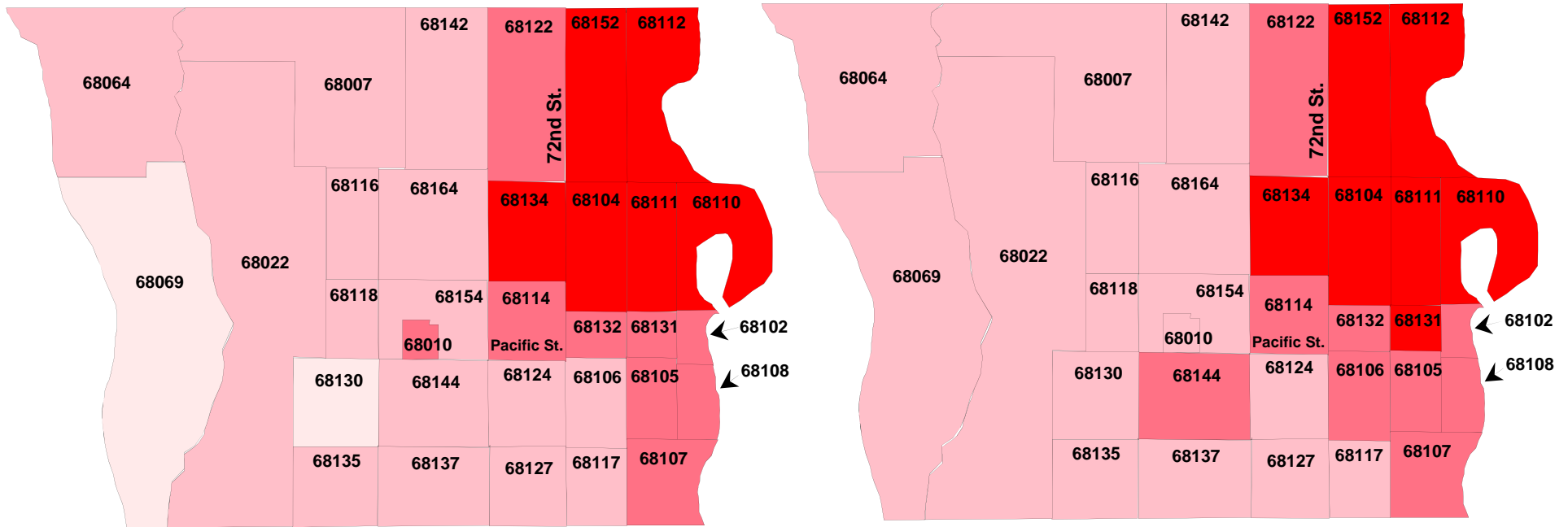
Gonorrhea Rates* by ZIP Code

Both Genders, 15 to 24 Age Group

Douglas County, Nebraska - Five Year Average

2013 - 2017

2014 - 2018



Rates per 100,000*

- 1000 & Greater
- 400 to 1000
- 100 to 400
- Less than 100

Populations for 2013-2018 are based on 2010 US Decennial Census.
 Source: Douglas County STD
 Based on Date of Report

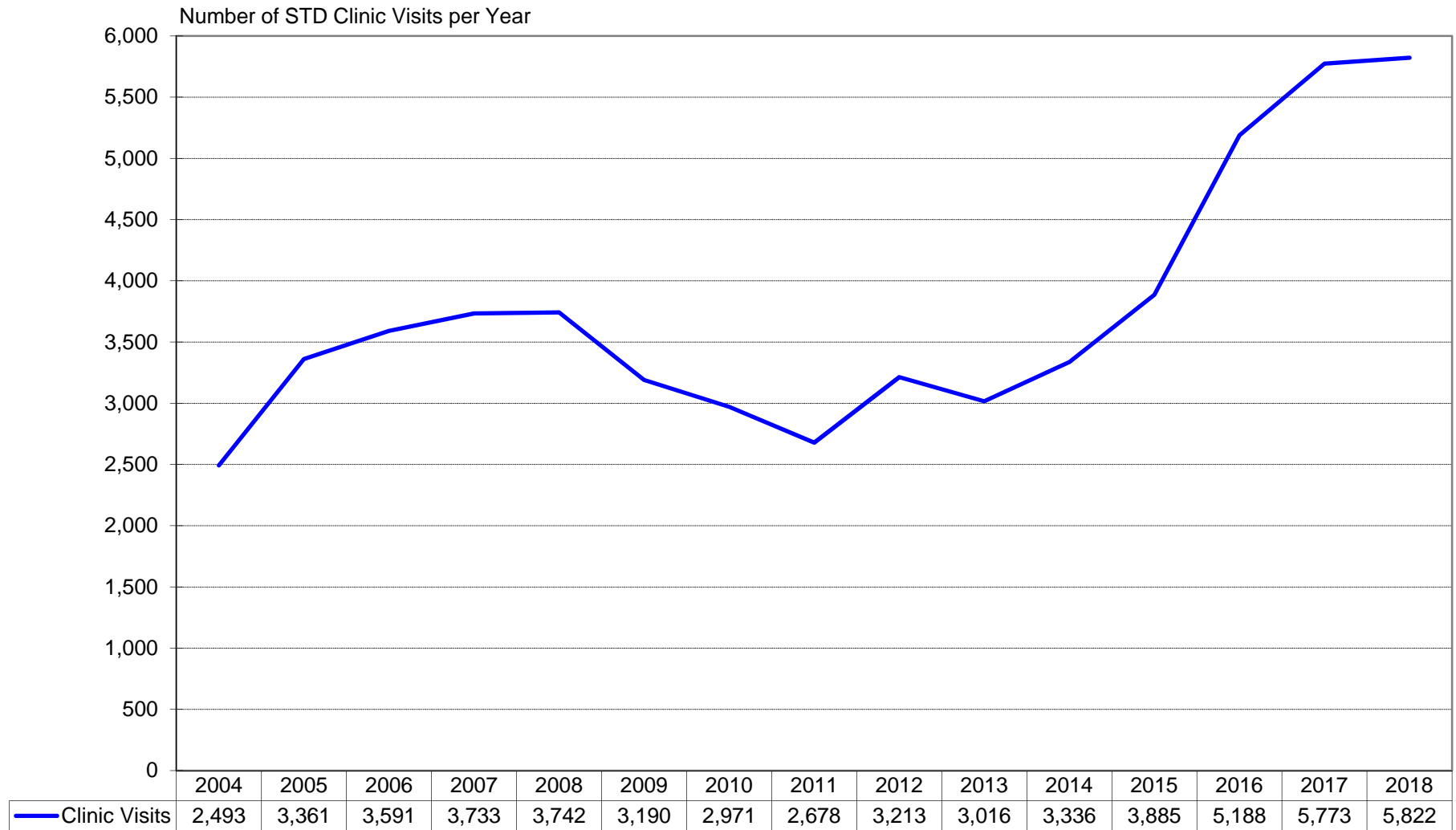
Douglas County Health Department
 02/28/2019



STD Clinic Visits per Year

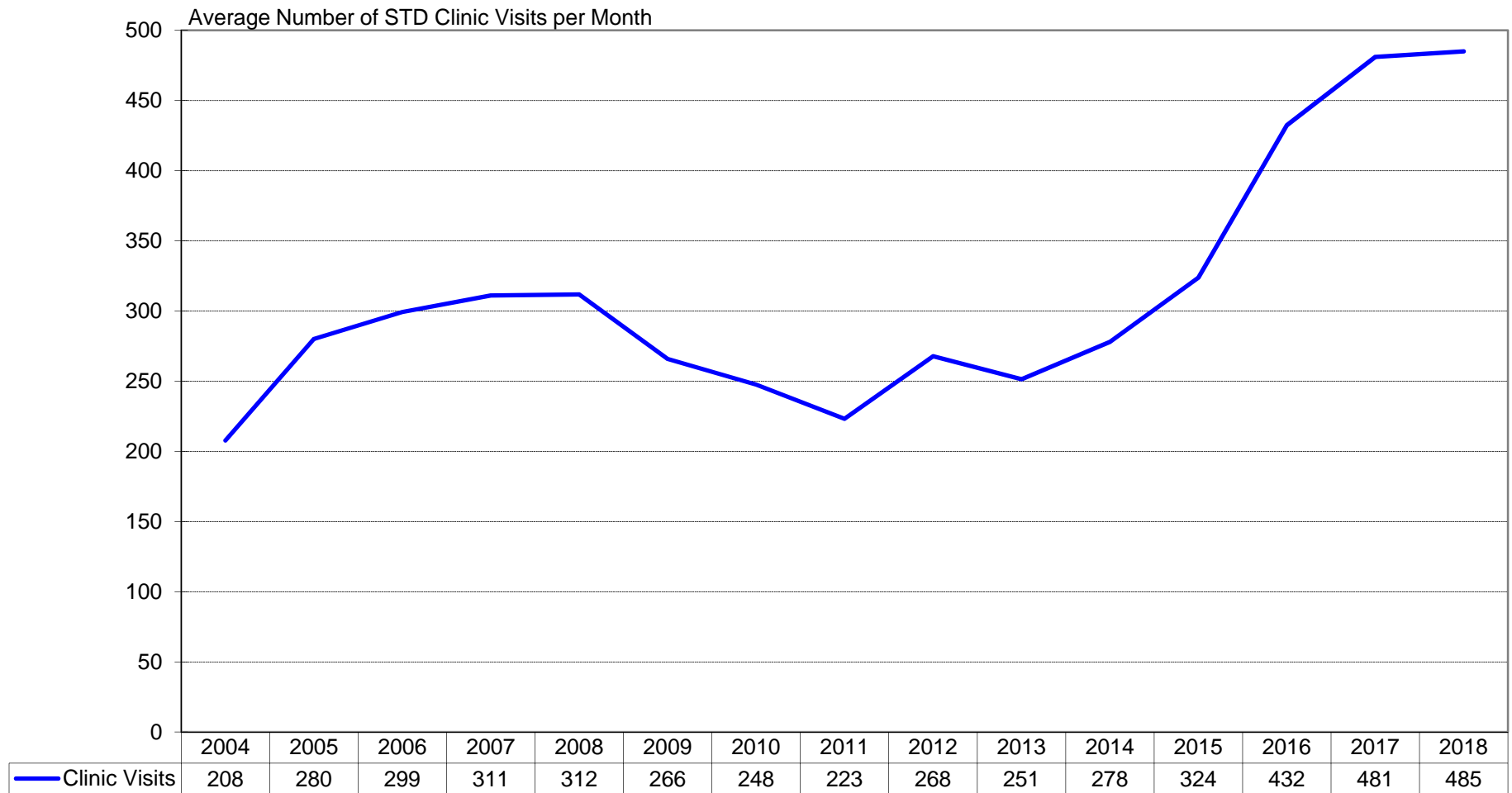
Douglas County Health Department STD Clinic

2004-2018



Source: Douglas County STD
Based on Date of Report

Average STD Clinic Visits per Month by Year Douglas County Health Department STD Clinic 2004-2018



Source: Douglas County STD
Based on Date of Report

Douglas County Health Department

STD Control Program

- Clinical examination, laboratory testing, and appropriate treatment
- Investigation and anonymous partner notification
- Disease surveillance and statistics
- Community Education

What can be done to change this trend?

- Increase awareness in the community
- Ask for assistance from everybody in the community
- Change priorities in organizations to make a difference
- Support programs that effect behavior change in the community
- Treat epidemic